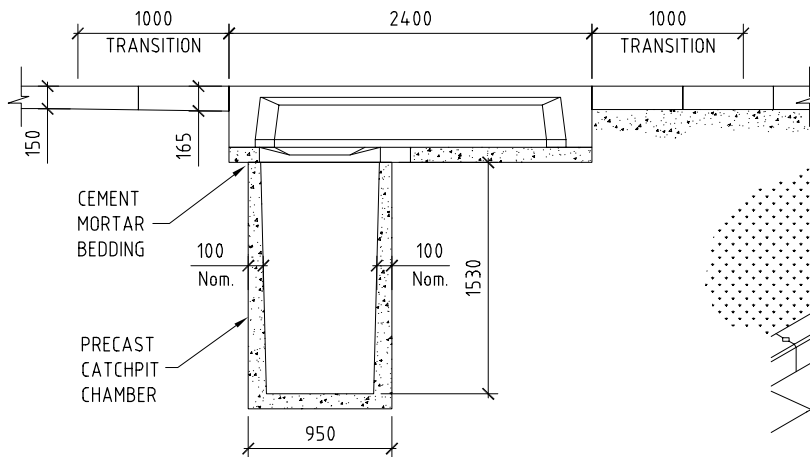
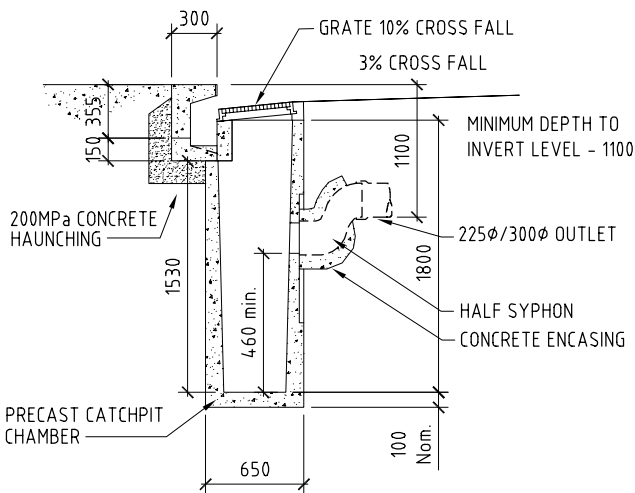
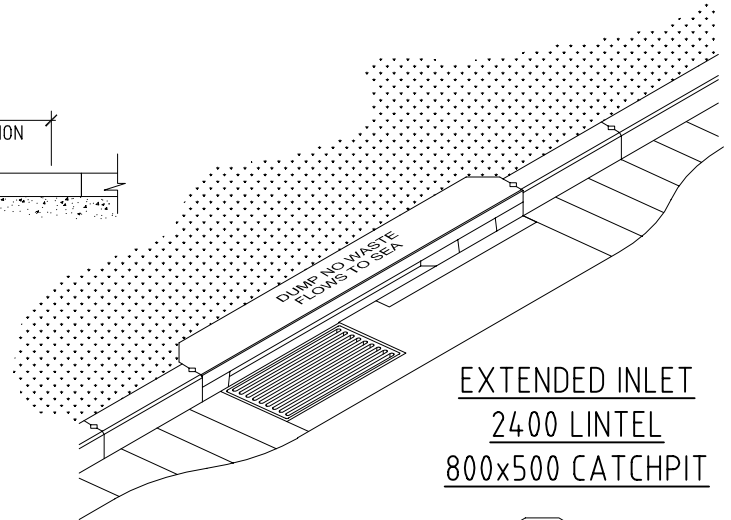


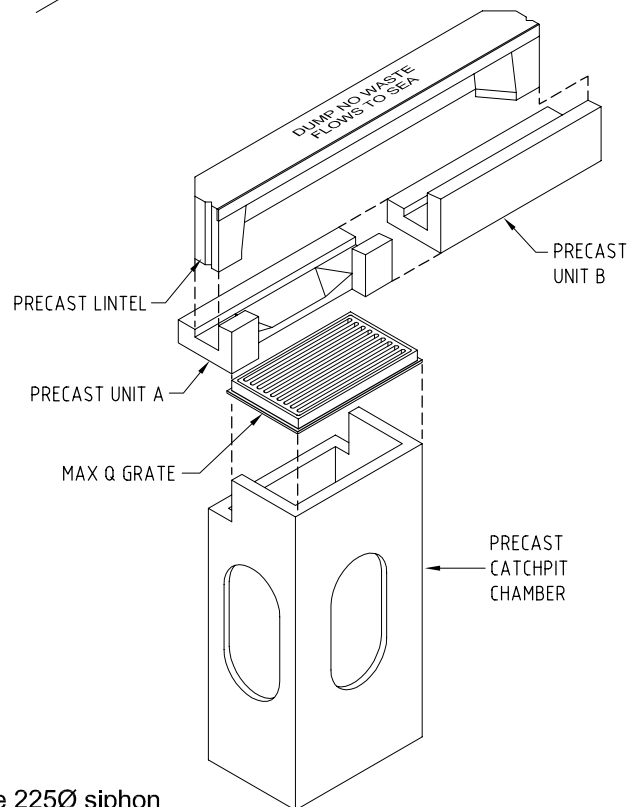
SECTION C-C



SECTION A-A



SECTION B-B



**Notes:**

1. All concrete to be 25 MPa.
2. Grates shall be Max Q 800 × 500.
3. A half siphon shall be used in all cases. The capacity of the 225Ø siphon outlet is 50 L/s.
4. The Humes Max Pit may be retrofitted to an existing catchpit. When retrofitting Unit A to existing catchpit, trim back existing catchpit as shown above right. Place Unit A centrally over back of catchpit on concrete bedding.

**MANARC**

MANUKAU CITY APPROVED  
REQUIREMENT

DETAIL:

**HUMES MAX PIT**

UPDATED:

**AUG 2006**

DETAIL No:

**MD-21**

**MANUKAU CITY COUNCIL**