

RECYCLING

It's getting easier!



Te Kaunihera o
MANUKAU
City Council



YOUR GUIDE

to Manukau's new recycling service
and your new recycling wheelie bin



 www.manukau.govt.nz/recycling

The days of throwing out rubbish and not worrying about the environmental consequences are over. The average 11.75kg bag of rubbish that a Manukau household throws out each week will release 9.15kg carbon dioxide (CO₂) into the atmosphere.

Recycling as much as possible is an effective way of reducing that and doing something positive for the environment.

Every household and school in Manukau is getting a **new recycling wheelie bin**, which will make it easier to recycle more. They have **4.5 times more space** than the old green crates and you can put all of your recycling, including paper and cardboard, into the same bin.

Your recycling will be sorted at the most technologically advanced recycling facility in the southern hemisphere. This will help increase recycling volumes.

By making it easier and having better sorting technology we estimate the new recycling service will increase recycling volumes by 15 to 25 per cent.



Easy as 1, 2, 3

1. Recycling more is better for the environment
2. The new bins are easier to move around and safer to collect
3. Lids on the bins will stop recycling blowing out, meaning tidier streets.

Ki te pīrangī koe ki tēnei puka whakāmarama mō te tukurua i tōu reo ake, haere ki www.manukau.govt.nz/recycling, waea rānei ki 262 5104

Āfai 'e te mana'omia lenei tusitusiga ma fa'amatalaga e uiga i le toe fa'aaogāina i lau gagana fa'amolemole asiāsi le 'upega o feso'ota'iga www.manukau.govt.nz/recycling pe telefoni le 262 5104

Kapau te ke fiema'u 'a e ki'i tohi fakamatala ko eni' pea mo ha ngaahi fakamatala ki he recycling 'i ho'o lea tu'ufonua', kātaki 'o vakai'i e 'initaneti' 'i he tu'asila www.manukau.govt.nz/recycling pe telefoni 262 5104

如想获得其它语言的小册子和关于废品回收的信息，请致电 262 5104 或浏览网站 www.manukau.govt.nz/recycling

आपको यह परितका तथा रिसारदकलिंग फे बारे में जानकारी अपनी भाषा में चाहिए तो कृपया www.manukau.govt.nz/recycling वेबसाइट पर जाएं 262 5104 नम्बर पर फोन करें |

YOUR RECYCLING WHEELIE BIN



Easy as 1, 2, 3

1. Begin using your new recycling wheelie bin from 30 June
2. Put out for collection fortnightly
3. All your recycling goes in one bin, including paper.



Please don't use this bin for your recycling until 30 June, when the new collections begin. Recycling collections will be fortnightly - information about your recycling day is included with the bin, at www.manukau.govt.nz/recycling or by calling the council call centre on 262 5104.

Your recycling wheelie bin **is not for rubbish, plastic bags or garden waste.**

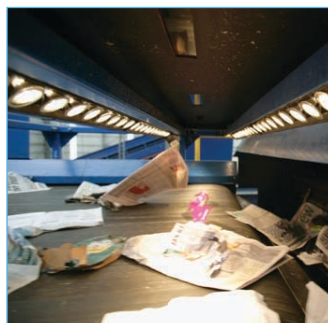
Manukau people are good at recycling, but there's room for improvement. In the average rubbish bag there's still about 20 per cent that could be recycled.

WHERE DOES MY RECYCLING GO?



Easy as 1, 2, 3

1. Collected by Enviroway's fleet of bio-fuel powered recycling trucks
2. Sorted at high-tech recycling facility run by Visy Recycling
3. Ready to be made into new products.



You can play your part and help our environment by making sure everything you put out is recyclable. Also think about how you can reduce your use of non-recyclable products, or how to re-use them so they don't end up in landfill.

WHAT CAN GO IN THE NEW RECYCLING BIN?



- ✓ Newspapers, magazines, junk mail and brochures
- ✓ Cardboard and non-foil wrapping paper
- ✓ Dry food packaging e.g. cereal boxes
- ✓ Empty pizza boxes
- ✓ Telephone directories
- ✓ Writing paper and envelopes (even those with plastic windows)



- ✓ Plastic milk bottles and soft drink bottles
- ✓ Plastic shampoo and conditioner bottles
- ✓ Plastic household cleaning fluid bottles e.g. washing up liquid, etc
- ✓ Any plastic container from the kitchen, bathroom and laundry
- ✓ Drinks cans - aluminium, steel
- ✓ Glass bottles and jars
- ✓ Food tins (rinsed)
- ✓ Empty aerosols
- ✓ Yoghurt pots, margarine tubs and ice cream containers
- ✓ Milk and juice cartons.



- ✗ Household rubbish
- ✗ Food waste
- ✗ Plastic shopping bags and plastic food wrap
- ✗ Engine oil bottles and automotive parts
- ✗ Paint or chemicals
- ✗ Hot ashes
- ✗ Garden waste
- ✗ Polystyrene
- ✗ Drinking glasses
- ✗ Ceramics, crockery, porcelain and oven ware
- ✗ Disposable nappies
- ✗ Light bulbs
- ✗ Mirrors
- ✗ Window or windscreen glass
- ✗ Computers.

For information on recycling hazardous waste visit www.hazmobile.org.nz or call 262 5104.

WHY SHOULD I RECYCLE?



In the year to July 2007 Manukau residents recycled 20,713 tonnes, but 88,613 tonnes of rubbish still ended up in a landfill. That's enough to fill 35 Olympic sized swimming pools or the equivalent of 4430 buses.

Recycling makes a huge difference to our environment. It helps reduce carbon emissions because the materials don't go to landfills, reduces the need to take raw materials from our fragile environment and saves energy.

Here are some examples of how recycling can reduce impacts on the environment.

Paper and cardboard

- Making paper from recycled materials results in 74 per cent less air pollution and 35 per cent less water pollution
- Recycling one ton of newspaper stops the release of 2.5 tons of carbon dioxide into the air
- Every ton recycled saves 13 trees and conserves 31,780 litres of water.

Glass jars/bottles

- Recycling a glass jar saves enough energy to light a bulb for four hours
- Recycling glass saves 25-32 per cent of the energy used to make it.

Plastic bottles and containers

- A ton of plastic containers made with recycled plastic conserves about 7,200 kWh of electricity, the equivalent of seven months power for an average home
- Five 2-litre PET bottles makes enough fibrefill for one jacket.

Aluminium cans

- Turning old cans into new ones uses 95 per cent of the energy needed to make new cans
- One recycled aluminium can saves enough electricity to run a computer or a television for three hours.

WHAT ELSE CAN I DO TO REDUCE WASTE?

Reduce

The most effective way of minimising the amount of rubbish you send to a landfill is to reduce it.

- Choose products with little or no packaging
- Buy in bulk to reduce packaging
- Buy products with re-usable or recyclable packaging
- Choose products that display the Environmental Choice New Zealand tick - this shows they have met published environmental standards, see www.enviro-choice.org.nz.



Re-use

This is another easy way of minimising your rubbish. It saves the energy and resources needed to make new products – and saves you money too.

- Say no to plastic bags, take re-usable bags to the shop instead
- Buy re-usable, long-lasting, repairable products instead of disposable items
- Use empty plastic containers or jars for storing food or other things
- Save wrapping paper and boxes to use again
- Shop at second-hand stores or use trading websites and classifieds to find 'pre-loved' items
- Sell unwanted items online or hold a garage sale instead of throwing them away
- Give unwanted clothes to opportunity shops or used clothing bins
- Donate unwanted items to schools, crèches and kindergartens at www.donatenz.com or pass on everything from old computers to building materials at www.renewwasteexchange.org.nz.

OTHER RECYCLING OPTIONS

Paint

Take unwanted paint and paint containers to your local Resene Colourshop, Placemakers or Enviropaints in East Tamaki for recycling. Recycled paint is used to paint out graffiti in Manukau!

Hazardous household waste

The regular Hazmobile collections allow you to drop off old batteries, car batteries, garden chemicals and waste oil so they can be recycled safely. Find out when the next collection in your area is at www.hazmobile.govt.nz or www.manukau.govt.nz/reducewaste

Plastic bags

A number of supermarkets now have places to drop off plastic bags so they can be recycled.

Food and garden scraps

Start a compost heap or worm farm, then put it to use on plants or in your garden. Free Create Your Own Eden courses are available to help Manukau residents learn more about this. You will receive a \$20 discount voucher to purchase a compost or worm bin when you complete it. Find out more at www.manukau.govt.nz



Use re-usable bags



Start a compost heap or a worm farm

COMMON QUESTIONS

Will the bins be heavier to move around and take up more room?

They will take up roughly the same space as the current crates, although they will be taller. The recycling wheelie bins will actually be easier and safer to move around than the current crates because the weight is carried by the axle of the wheels.

Why a fortnightly collection?

The new bins have 4.5 times more space than the old green crates meaning they only need to be collected once a fortnight. The fortnightly collection also means a reduction in vehicle movements. There won't be a vehicle coming to pick up recycling then another for paper, making it more environmentally friendly by reducing vehicle emissions.

Why is it now okay to put paper in the same bin as other recycling?

The aim is to make it easier for residents to recycle more. The facility that sorts your recycling is the most technologically advanced in the southern hemisphere. It will use various screening techniques and optical sorting of glass into colours and plastic into grades, leading to much improved processing rates and reductions in product contamination.

Collection trucks also only compact recycling to a certain level to avoid glass and paper becoming unusable.

Why can't I put plastic bags in the bin?

Plastic bags can easily get caught in the machinery used to sort recycling. You can take bags to supermarkets to be recycled, re-use them or take re-usable cloth bags to the shops.



For more information visit
www.manukau.govt.nz/recycling
 or phone the council call centre
 on **262 5104**

