

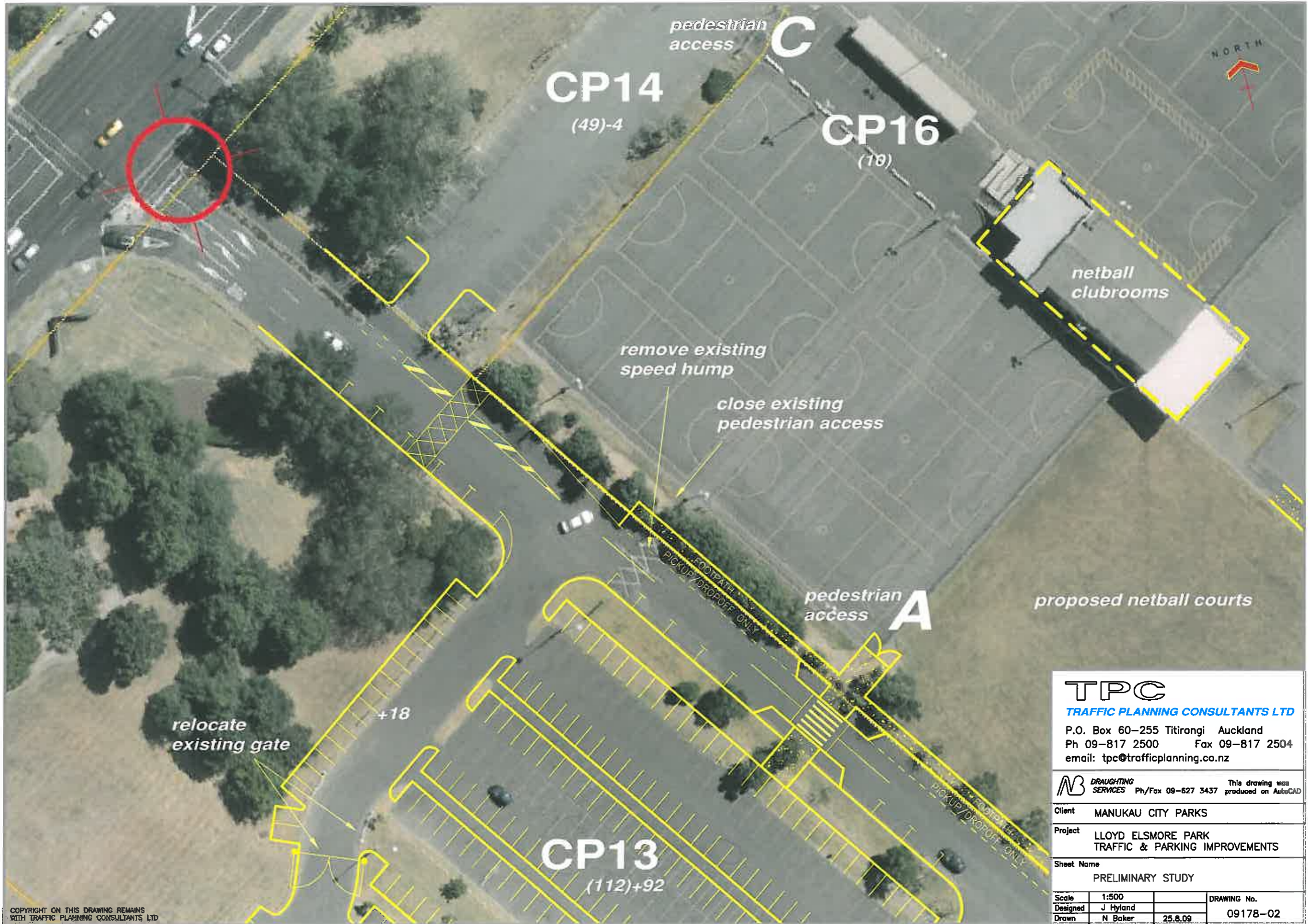
COPYRIGHT ON THIS DRAWING REMAINS WITH TRAFFIC PLANNING CONSULTANTS LTD

**TPC**  
**TRAFFIC PLANNING CONSULTANTS LTD**  
 P.O. Box 60-255 Titirangi Auckland  
 Ph 09-817 2500 Fax 09-817 2504  
 email: tpc@trafficplanning.co.nz

**LLOYD ELSMORE PARK  
 TRAFFIC & PARKING IMPROVEMENTS  
 PRELIMINARY STUDY**

REV DATE

Scale	1:2000	
Designed	J Hyland	
Drawn	N Baker	26.2.10
Approved		
DRAWING No.	09178-01	



**TPC**  
**TRAFFIC PLANNING CONSULTANTS LTD**  
 P.O. Box 60-255 Titirangi Auckland  
 Ph 09-817 2500 Fax 09-817 2504  
 email: tpc@trafficplanning.co.nz

---

**MB DRAUGHTING SERVICES** Ph/Fax 09-627 3437 This drawing was produced on AutoCAD

---

**Client** MANUKAU CITY PARKS

---

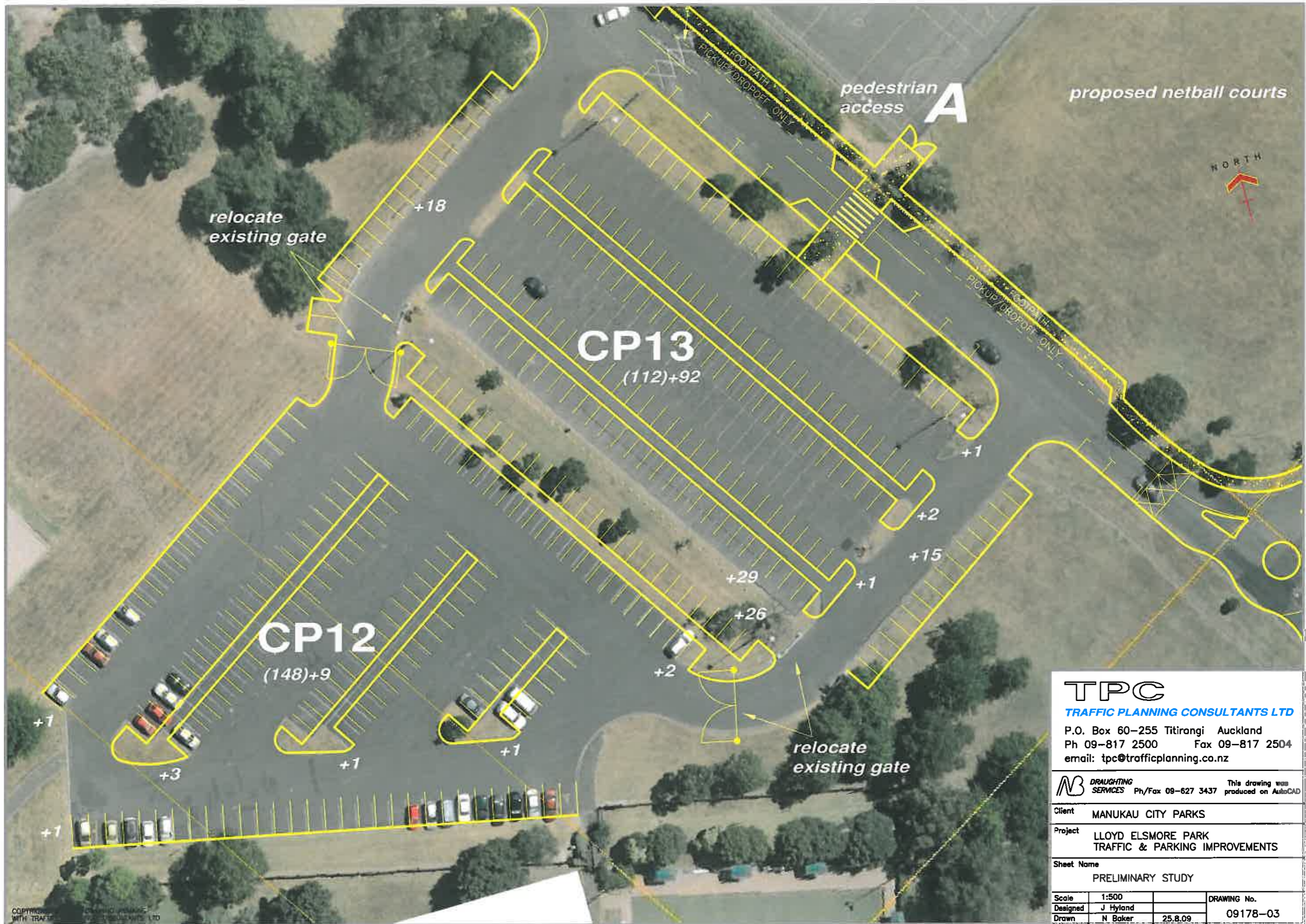
**Project** LLOYD ELSMORE PARK  
TRAFFIC & PARKING IMPROVEMENTS

---

**Sheet Name** PRELIMINARY STUDY

---

<b>Scale</b>	1:500	<b>DRAWING No.</b>
<b>Designed</b>	J Hyland	09178-02
<b>Drawn</b>	N Baker	25.8.09



**TPC**  
**TRAFFIC PLANNING CONSULTANTS LTD**  
 P.O. Box 60-255 Titirangi Auckland  
 Ph 09-817 2500 Fax 09-817 2504  
 email: tpc@trafficplanning.co.nz

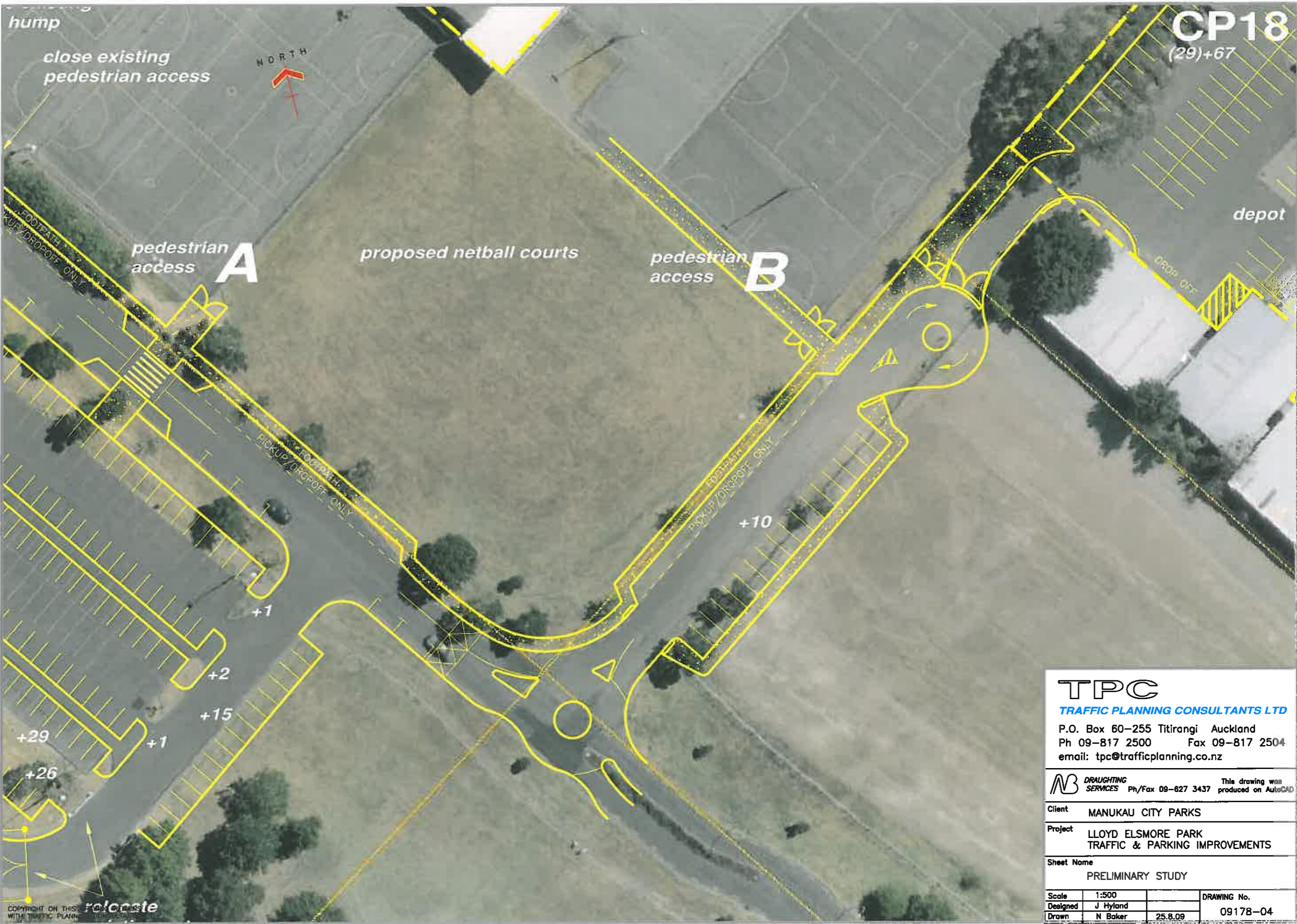
**MB DRAUGHTING SERVICES** Ph/Fax 09-627 3437 This drawing was produced on AutoCAD

Client **MANUKAU CITY PARKS**

Project **LLOYD ELSMORE PARK TRAFFIC & PARKING IMPROVEMENTS**

Sheet Name **PRELIMINARY STUDY**

Scale	1:500	DRAWING No.
Designed	J Hyland	09178-03
Drawn	N Baker	25.8.09



**CP18**  
(29)+67



**TPC**  
TRAFFIC PLANNING CONSULTANTS LTD  
P.O. Box 60-255 Titirangi Auckland  
Ph 09-817 2500 Fax 09-817 2504  
email: tpc@trafficplanning.co.nz

**MS** DRAUGHTING SERVICES Ph/Fax 09-827 3437 This drawing was produced on AutoCAD

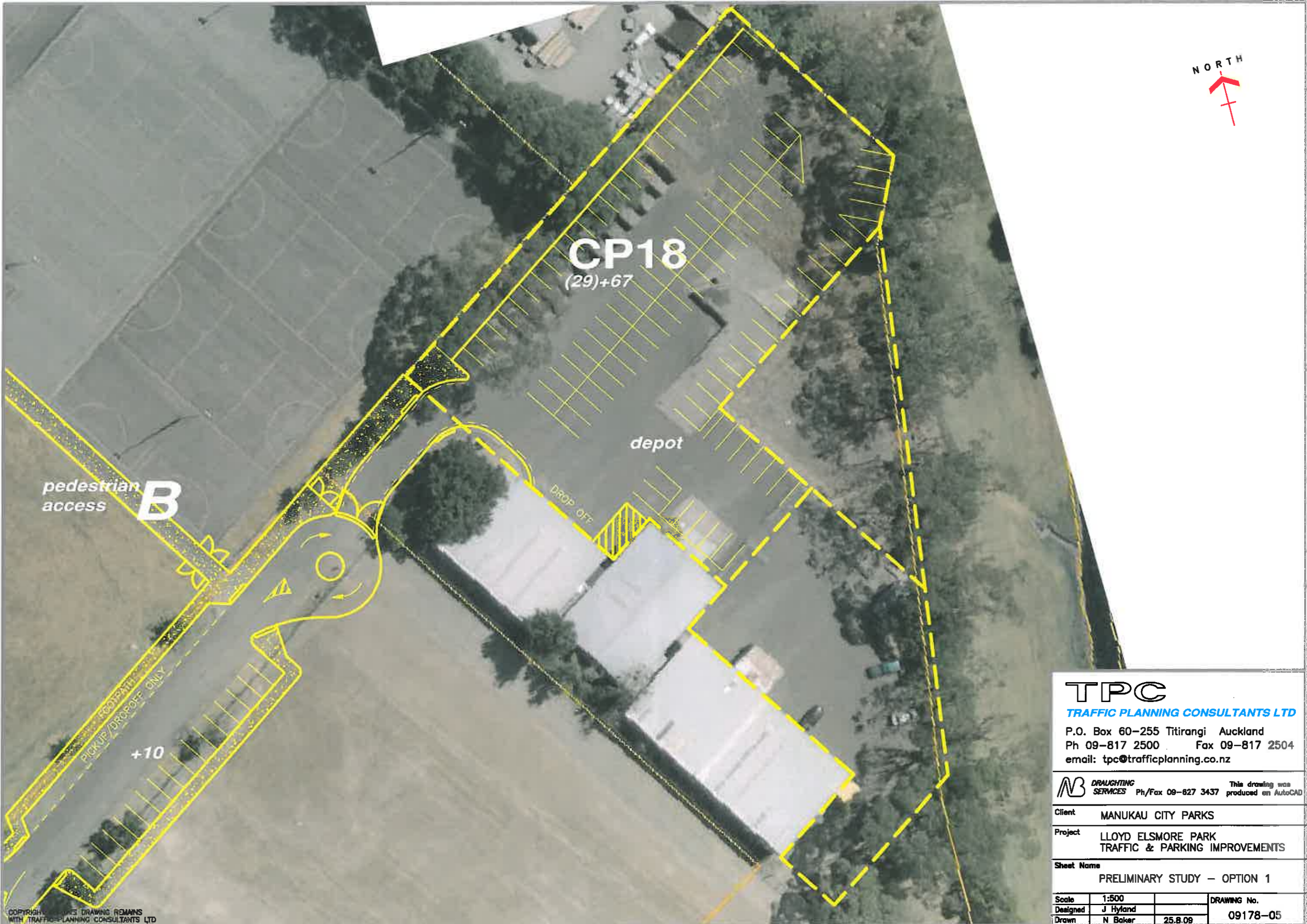
Client MANUKAU CITY PARKS

Project LLOYD ELSMORE PARK TRAFFIC & PARKING IMPROVEMENTS

Sheet Name PRELIMINARY STUDY

Scale	1:500	DRAWING No.
Designed	J Hyland	09178-04
Drawn	N Baker	25.8.09

Copyright on this drawing with Traffic Planning Consultants Ltd



**CP18**  
(29)+67

depot

pedestrian access **B**

Drop off

+10

**TPC**  
TRAFFIC PLANNING CONSULTANTS LTD  
P.O. Box 60-255 Titirangi Auckland  
Ph 09-817 2500 Fax 09-817 2504  
email: tpc@trafficplanning.co.nz

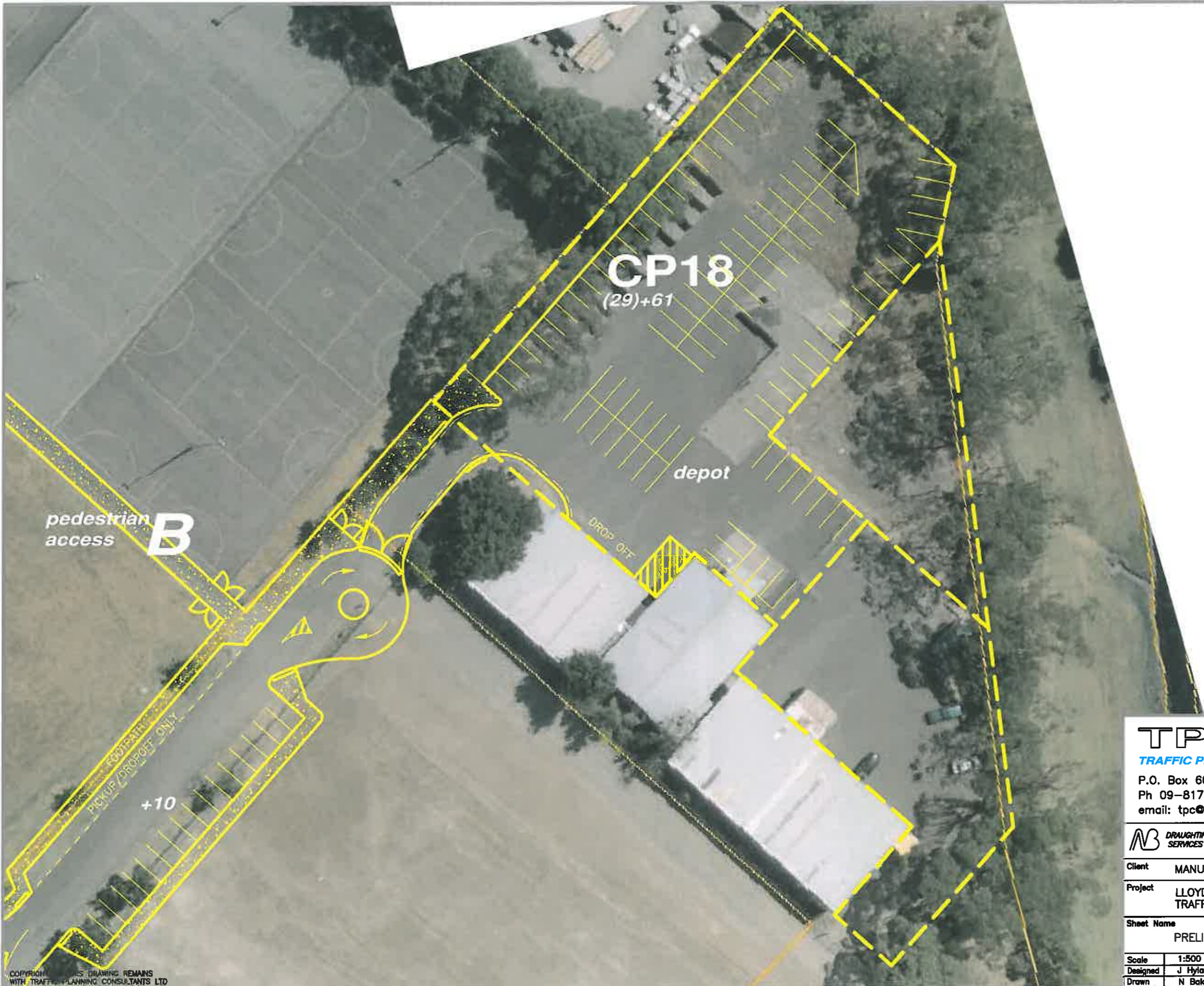
**AB** DRAUGHTING SERVICES Ph/Fax 09-827 3437 This drawing was produced on AutoCAD

Client MANUKAU CITY PARKS

Project LLOYD ELSMORE PARK TRAFFIC & PARKING IMPROVEMENTS

Sheet Name PRELIMINARY STUDY - OPTION 1

Scale	1:500	DRAWING No.
Designed	J Hyland	09178-05
Drawn	N Baker	25.8.09



**CP18**  
(29)+61

depot

pedestrian access **B**

DROP OFF

+10

**TPC**  
TRAFFIC PLANNING CONSULTANTS LTD  
P.O. Box 60-255 Titirangi Auckland  
Ph 09-817 2500 Fax 09-817 2504  
email: tpc@trafficplanning.co.nz

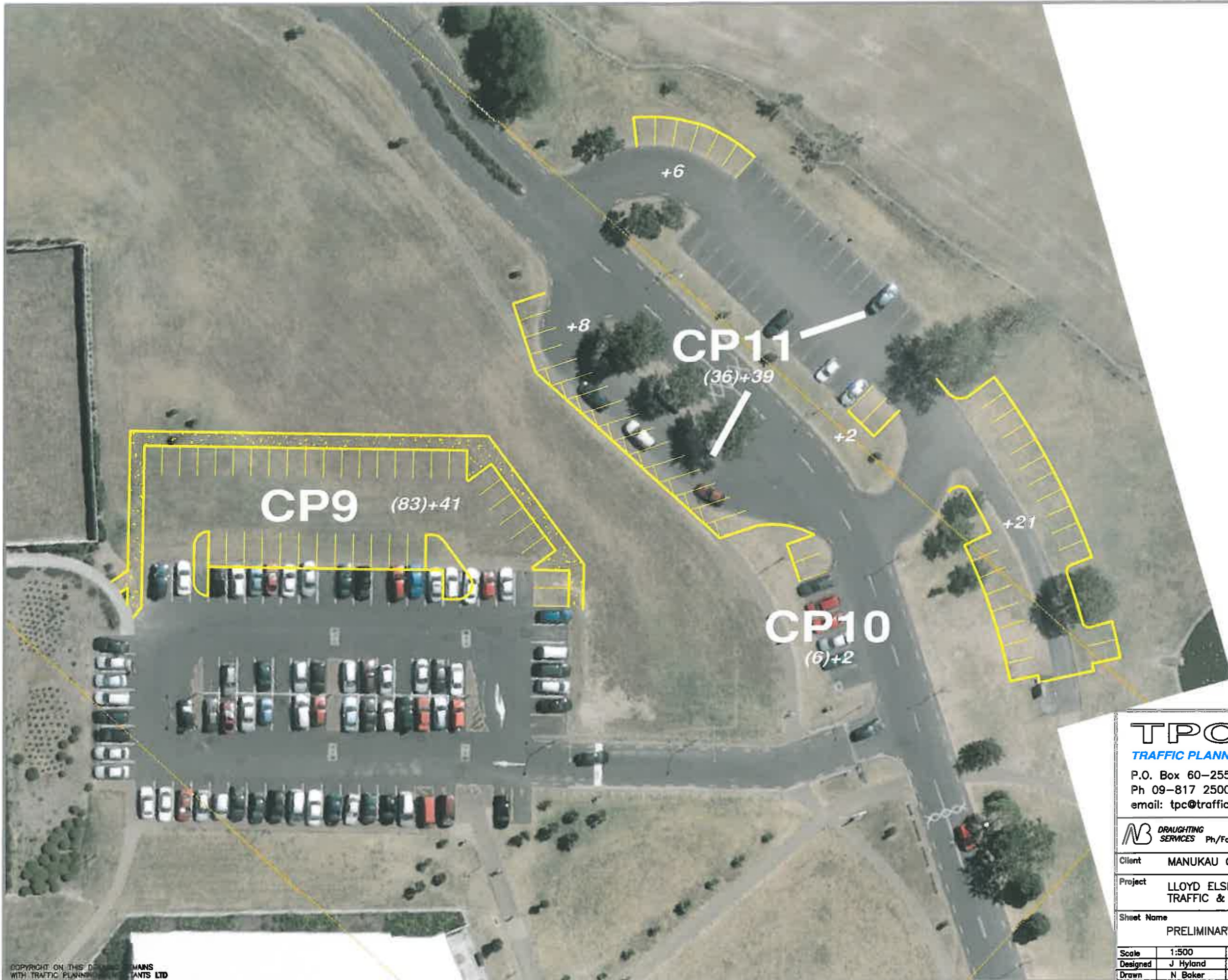
**MB** DRAUGHTING SERVICES Ph/Fax 09-627 3437 This drawing was produced on AutoCAD

Client MANUKAU CITY PARKS


Project LLOYD ELSMORE PARK  
TRAFFIC & PARKING IMPROVEMENTS

Sheet Name PRELIMINARY STUDY - OPTION 2

Scale	1:500	DRAWING No.
Designed	J Hyland	09178-05
Drawn	N Baker	25.8.09



**TPC**  
**TRAFFIC PLANNING CONSULTANTS LTD**  
P.O. Box 60-255 Titirangi Auckland  
Ph 09-817 2500 Fax 09-817 2504  
email: tpc@trafficplanning.co.nz

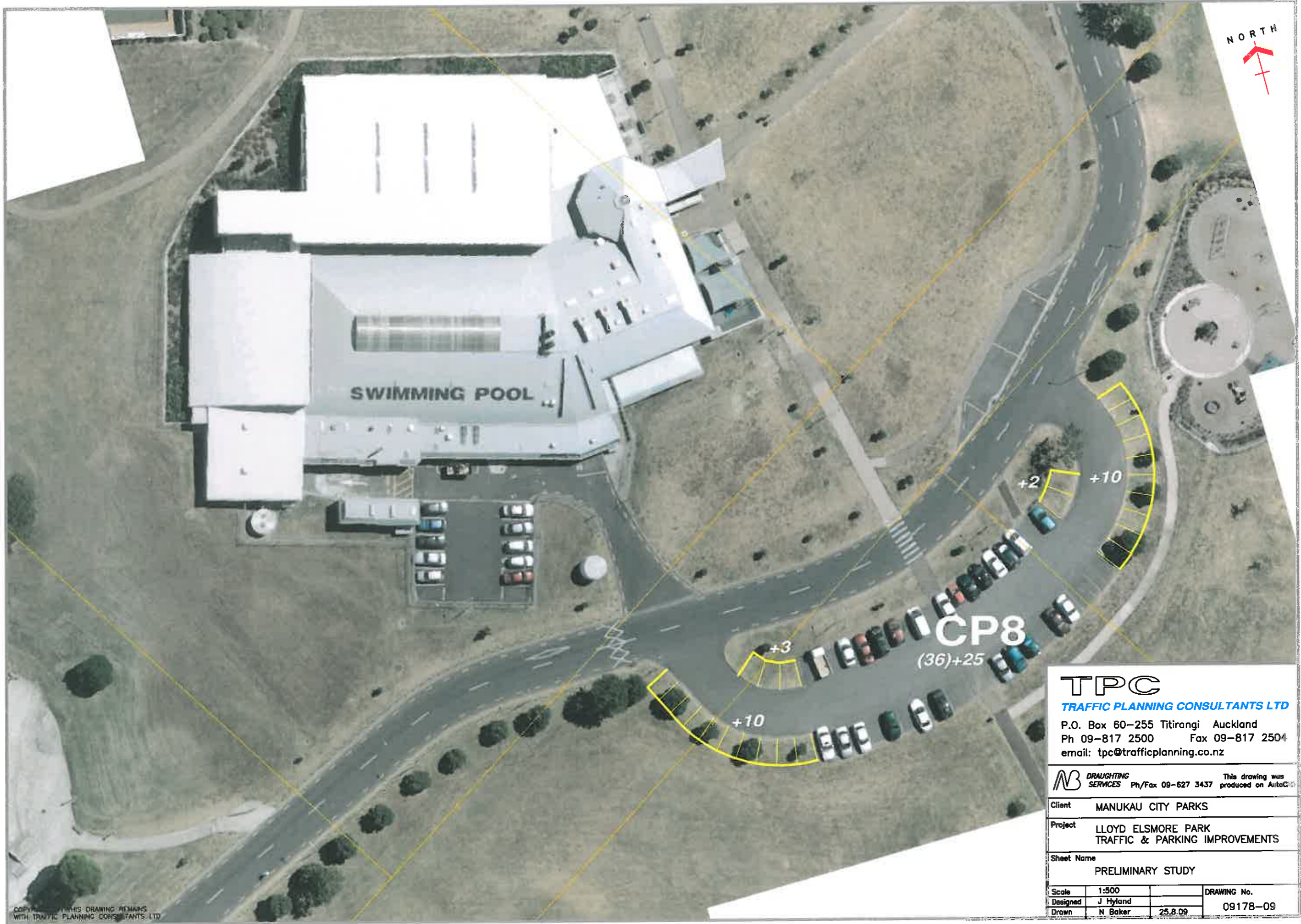
 **DRAFTING SERVICES** Ph/Fax 09-627 3437 This drawing was produced on AutoCAD

Client **MANUKAU CITY PARKS**

Project **LLOYD ELSMORE PARK  
TRAFFIC & PARKING IMPROVEMENTS**

Sheet Name **PRELIMINARY STUDY**

Scale	1:500	DRAWING No.
Designed	J Hyland	09178-06
Drawn	N Baker	



SWIMMING POOL

CP8  
(36)+25

+3

+10

+2

+10

**TPC**  
TRAFFIC PLANNING CONSULTANTS LTD

P.O. Box 60-255 Titirangi Auckland  
Ph 09-817 2500 Fax 09-817 2504  
email: tpc@trafficplanning.co.nz

**MB** DRAUGHTING SERVICES Ph/Fax 09-627 3437 This drawing was produced on AutoCAD

Client MANUKAU CITY PARKS

Project LLOYD ELSMORE PARK  
TRAFFIC & PARKING IMPROVEMENTS

Sheet Name PRELIMINARY STUDY

Scale	1:500	DRAWING No.	09178-09
Designed	J Hyland		
Drawn	N Baker	25.8.09	