

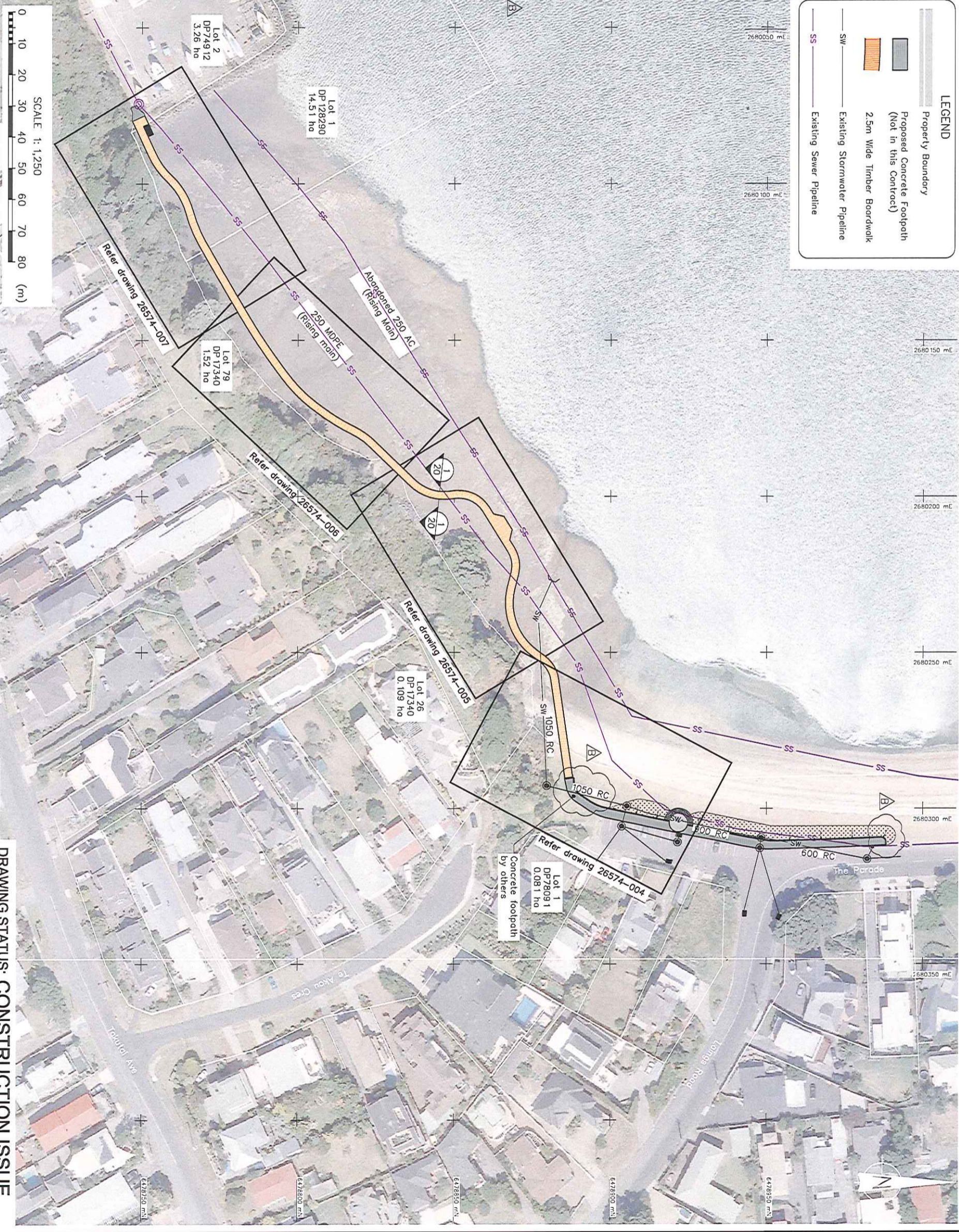
SETOUT POINT TABLE

POINT	NORTHING (mN)	EASTING (mE)	CHAINAGE (m)
1	6478886.83	2680290.43	2.500
2	6478885.72	2680282.71	10.000
3	6478884.30	2680272.81	20.000
4	6478882.88	2680262.91	30.000
5	6478882.26	2680258.61	34.350
6	6478880.97	2680254.94	38.260
7	6478879.60	2680253.13	40.000
8	6478878.38	2680252.04	42.170
9	6478875.65	2680249.98	45.590
10	6478871.87	2680246.24	50.000
11	6478868.87	2680240.78	57.190
12	6478867.95	2680237.16	60.000
13	6478868.26	2680229.36	68.780
14	6478868.77	2680227.27	70.000
15	6478869.45	2680224.46	73.830
16	6478869.60	2680220.48	77.840
17	6478868.64	2680217.55	80.000
18	6478868.19	2680216.75	81.850
19	6478865.17	2680209.69	89.430 - 1.2m right offset
20	6478863.36	2680209.06	90.000
21	6478860.13	2680203.91	97.010
22	6478857.45	2680201.08	100.000
23	6478855.75	2680200.10	102.900
24	6478849.99	2680199.34	108.790
25	6478849.40	2680199.44	109.390
26	6478847.87	2680199.61	110.000
27	6478842.51	2680198.95	116.360
28	6478838.43	2680196.94	120.000
29	6478836.58	2680195.42	123.330
30	6478831.12	2680191.13	130.000
31	6478823.94	2680183.16	140.000
32	6478820.98	2680180.71	144.780
33	6478817.69	2680178.73	148.620
34	6478815.64	2680177.67	150.000
35	6478811.54	2680175.28	155.670
36	6478807.20	2680172.32	160.000
37	6478803.80	2680169.69	165.230
38	6478799.64	2680165.80	170.000
39	6478796.33	2680161.92	176.030
40	6478793.39	2680158.00	180.000
41	6478787.69	2680149.79	190.000
42	6478782.44	2680141.28	200.000
43	6478777.37	2680132.66	210.000
44	6478772.30	2680124.04	220.000
45	6478769.06	2680118.36	227.470
46	6478767.51	2680115.27	230.000
47	6478766.89	2680113.82	233.500
48	6478765.29	2680109.05	237.540
49	6478764.17	2680105.85	240.000
50	6478762.80	2680103.18	243.930
51	6478758.80	2680098.22	250.330
52	6478758.40	2680097.82	250.000
53	6478755.64	2680094.61	255.140
54	6478753.22	2680090.46	259.950
55	6478752.83	2680089.61	260.000
56	6478748.64	2680080.52	270.000
57	6478748.06	2680079.27	271.380

See drawings 26574-004 to 26574-006 for locations

LEGEND

- Property Boundary
- Proposed Concrete Footpath (Not in this Contract)
- 2.5m Wide Timber Boardwalk
- Existing Stormwater Pipeline
- Existing Sewer Pipeline



REVISION DESCRIPTION	BY	DATE
A Issued For Tender	MCHT	06/10
B Issued For Construction	WAT	21/10

DESIGNED : RRH Jul 10
DRWN : JATG Jul 10
DESIGN CHECKED : WAT 21/10
DRAWING CHECKED : WAT 21/10
CADFILE : \26574-002.dwg
APPROVED : [Signature]
 This drawing is not to be used for construction purposes unless signed as approved.
 COPYRIGHT ON THIS DRAWING IS RESERVED.

Tonkin & Taylor
 Environmental and Engineering Consultants
 105 Carlton Gore Road, Newmarket, Auckland
 Tel. (09) 365 6000 Fax. (09) 307 0265
 www.tonkin.co.nz

CLIENT PROJECT: MANUKAU CITY COUNCIL
TITLE: TAKUAI DRIVE BOARDWALK
DRAWING STATUS: CONSTRUCTION ISSUE
General Arrangement Plan
 Dwg. No. 26574-002
 SCALES (A3 SIZE) 1:1,250
 REV. B