

Crime Prevention Action Plan (2003)

Minute Number: CL/DEC/2088/03

CL/DEC/2088/03; That the under mentioned recommendations (Minute Numbers 1961/03, 1964/03, and 1967/03) with the exception of Minute Number 1958/03 (Cr McGechie) made at a meeting of the Community Safety Committee held on 10 December 2003 be adopted.

MINUTE NO. CS/DEC/1964/03 – RECOMMENDATION TO COUNCIL [POLICY]

That the Crime Prevention Action Plan and additional editorial changes be adopted.



Te Kaunihera o
MANUKAU
City Council

Crime Prevention Action Plan

November 2003

CONTENTS

Introduction	3
National and Local Crime Strategies	4
1. Crime Reduction Strategy.....	4
2. New Zealand Police.....	4
Regional Crime Strategies	5
3. Counties Manukau Police District Plan 2003/04.....	5
4. Ministry of Justice & Police: Towards a Safer Community.....	5
5. Child, Youth and Family Regional programme.....	5
National & Local Policies	5
National.....	5
6. Sustainable Development Programme of Action (2003).....	5
Local Strategies.....	6
7. Manukau City Council Policies.....	6
Summary.....	7
Social Environment in Manukau City	8
8. Population of Manukau.....	8
9. Social Environment Report (February 2003).....	8
Perceptions of Crime in Manukau	12
10. Community Consultation.....	12
Crime in Manukau	15
11. Background.....	15
12. National Crime Levels.....	15
13. Counties Manukau Crime Statistics 2002/03.....	16
Crime Prevention Action Plan	20
14.1 Structure.....	20
14.2 Crime Prevention Projects.....	20
Table 1: Detailed Action Plan	22
Appendix 1: Crime Prevention Projects	28

Introduction

Crime, disorder and fear of crime have become major concerns for many communities, including Manukau. Traditionally we have turned to the Police and criminal justice agencies to deal with these problems, however crime levels are higher than in the past, society has become more complex and demands on Police have increased substantially.

Furthermore, most of the work Police and the criminal justice agencies do is reactive. If we want to prevent crime, we have to intervene before it is committed. Increasingly there is a role for communities to help prevent crime by addressing the causes of crime and becoming a part of the solution.

In order to put in place well-targeted measures that focus on offenders, targets or guardians which prevent crime, a range of organisations need to act co-operatively, together with the local community.

Why should a local council care about crime?

Local government is about more than providing basic services. In Manukau it is about creating vibrant and strong communities where people are proud, progressive and prosperous. Crime and the fear of crime reduce the quality of life in a community.

Manukau City Council has been involved in crime prevention since 1989 when a partnership was established with the Crime Prevention Unit (Ministry of Justice) to sponsor the Safer Manukau Community Council.

However public feedback has asserted that Council's involvement in this partnership alone is not enough as citizens wish to see a more visible contribution by Council towards crime prevention. In the Council's Annual Citizen's Perception Surveys the community has consistently identified that crime and safety is a priority concern. In comparison with other large cities in New Zealand, the perception of safety in Manukau was lowest. Community feedback in public consultation also asked Council to become more involved in assisting communities to prevent crime.

Research shows that people exaggerate the risk of crime and are more afraid of crime than they need to be (see Community Consultation findings). What makes them afraid? Media reports about crime certainly encourage fear, but local issues play a great part. People are more likely to be afraid if they have been victims and/or if they encounter local conditions which are the result of minor crimes (i.e. graffiti). This environment can also encourage criminals to commit crimes, leading to higher crime rates.

Crime therefore not only affects a local community psychologically - it also affects it economically and commercially. Crime is therefore expensive in two ways - it directly costs the victim and it costs the whole community.

This environment can be said to currently exist in Manukau. Increasing community satisfaction and trust is one way of breaking down such an environment. When a local government succeeds in creating an area where crime is lower and less costly, it will also have succeeded in creating pleasant, reassuring surroundings where the fear of crime is low. This strengthens community bonds and gives people a sense of ownership in their neighbourhoods.

This Crime Prevention Action Plan recognises that Manukau City Council can have a key role to play in crime prevention and aims to work collaboratively with agencies and the community to achieve an environment where people feel safe and are safe.

National and Local Crime Strategies

Crime prevention and reduction involves a number of government stakeholders. The impact of national and local crime strategies upon Council's Crime Prevention Action Plan identifies where:

- Council & government agencies prioritise the same crime and/or target groups providing the opportunity for collaborative actions
- strategic alliances are encouraged between central and local government (i.e. mandate for Council involvement and/or partnerships)
- substantial action in specific crime prevention areas already exists.

National Crime Strategies

1. Crime Reduction Strategy

The Crime Reduction Strategy (CRS) was developed by the Ministry of Justice, New Zealand Police, Department of Courts, Child Youth & Family, and Corrections. The CRS identifies the strategic priorities for these stakeholder agencies.

The crime priorities for reduction are:

- Burglary
- Family violence & child abuse
- Theft off from vehicles
- Organised crime
- General violence (including sexual violence)
- Serious traffic offending

Target groups identified are:

- Youth
- Victims
- Families at risk
- Those addicted to drugs and alcohol
- Maori
- Pacific Island peoples

The CRS acknowledges that an agency may take lead responsibility for policies to target these priority crimes and groups (with other agencies contributing as needed). Other policies that contribute to the implementation of the CRS are:

- The Organised Crime Strategy (Police)
- Te Rito - Family Violence Prevention Strategy (Ministry of Social Development)
- The Youth Offending Strategy (Ministry of Justice).

To enact this work specific policies at a regional and local level are also developed (i.e. Counties Manukau Police's District Strategy for Family Violence and the Otahuhu/Papatoetoe Police Family Violence Action Plan).

2. New Zealand Police

Police are the main stakeholders in the criminal field. Through community consultation it was identified that the public expectations of Police roles and responsibilities are diverse and far-reaching. However with low Police numbers and limited resources, the ability to satisfy these perceptions will remain low without developing and maintaining partnerships with the community and other government agencies.

Strategic Plan to 2006

The Strategic Plan for Police identifies key themes and strategies that will be used to prevent and reduce crime nationally. There are two national strategies for Police that are important for Council:

1. **Community Safety.** Includes district strategies addressing crimes of local concern, road policing, use of intelligence in resource allocation, partnerships & community engagement, enhancing partners ability to reduce crime and enhance safety, and high visibility policing.
2. **Crime Reduction.** Includes district strategies addressing crimes of local concern, violent crime, youth crime, organised crime, burglary and road crime.

Regional Crime Strategies

3. Counties Manukau Police District Plan 2003/04

This Plan identifies the priorities for Counties Manukau Police.

The six outcome areas are:

- Violence reduction
- Burglary reduction
- Vehicle crime reduction
- Organised crime reduction
- Increased national security
- Safer roads

Key focus areas across these are:

- Maori responsiveness
- Pacific Peoples responsiveness
- Youth crime
- Repeat victimisation
- Community engagement

Counties Manukau Police also have three regional strategies to address burglary, family violence and motor vehicles.

Manukau City Council will seek to work collaboratively with Counties Manukau Police to develop a safer community.

4. Ministry of Justice & Police: Towards a Safer Community

In 2002 the Crime Prevention Unit (Ministry of Justice) and Police provided nearly \$500,000 to target Maori and youth offending within the Counties Manukau region. Other government agencies involved include Te Puni Kokiri, Child, Youth & Family and Manukau City Council. The result has been the selection of six programmes, four of which will be directly provided within Manukau City. They are:

- Crime prevention education programme for children
- Restorative justice programme
- Youth support programme
- Kaitiaki tangata programme.

5. Child, Youth and Family Regional programme

Child Youth & Family Services is fundamentally involved with crimes and victimisation as relating to children and youth; predominantly in the area of family violence, child abuse/neglect and serious youth recidivism. Council will also seek to support the efforts of this agency within Manukau.

National & Local Policies

National

6. Sustainable Development Programme of Action (2003)

This Programme of Action attempts to set a national direction for facing the growing population in New Zealand. Of particular importance to the Crime Prevention Action Plan are the goals regarding "Sustainable Cities" and "Investing in Child & Youth Development".

The Sustainable Cities Programme refers to improving urban design. The aim of the programme is to develop "liveable cities that support social wellbeing, quality of life and cultural identities" - this includes developing a New Zealand Urban Design Charter. This work will impact upon the design of the environment and supporting techniques which can discourage and prevent crime (i.e. crime prevention through environmental design).

Investing in child and youth development refers to improving outcomes for disadvantaged children and young people. One of the desired outcomes is to provide children and young people "lives free from violence and crime".¹ Of particular relevance are the programmes which include:

- Public education strategy on alternatives to physical punishment of children
- Minimum standards for identifying/responding to family violence for people working with children
- Care & Protection Blueprint
- Inter-agency co-ordinated responses to young offenders
- Promotion of safe-school cultures
- Co-ordination between anti-bullying initiatives and broader crime-prevention strategies.

Local Strategies

7. Manukau City Council Policies

7.1 Tomorrow's Manukau

Tomorrow's Manukau is the city's leading strategy identifying priorities for action and relationships within Manukau that seek to achieve them.

Tomorrow's Manukau's aim in crime prevention is to develop a "Vibrant & Safe Community". The following topics are identified as crime prevention priorities³ for Council:

- Alcohol related crime/injury
- Crime prevention through environmental design
- Youth offending/recidivism
- Child abuse
- Adult recidivism
- Equitable justice system
- Advocacy
- Safer neighbourhoods
- Burglary
- Road safety.

Identified target groups include:

- Volunteers
- Children.

The goal for Tomorrow's Manukau in crime prevention is to reduce the incidence of crime from 1,174 per 10,000 of population in 2000 to 940 per 10,000 of population by 2010⁴. New goals are also recommended for inclusion through this Action Plan's priorities and will be developed as project specifications are established.

7.2 Community Development Framework

The Community Development Framework provides a review of Council's role in community development to ensure its relevance for the future. Safety was included as a strategic direction in "Creating opportunities for Access to a Safe and Healthy Lifestyle".

Key points relevant to Council's involvement are:

- the role to advocate and support advocacy partnerships
- supporting agencies and programmes which encourage safer communities
- a commitment to advocacy and monitoring roles and supporting groups advocating for the community.

Recommendations for Council included:

¹ Sustainable Development Programme of Action p23

³ Tomorrow's Manukau p28-30

⁴ TM p25

- the need to explore opportunities for alternative, new and innovative service provision
- funding of externally-sourced services
- improve indicators, monitoring and understanding the impact of advocacy.

7.3 Other Council Strategies

The following strategies either contribute to, or impact upon, crime prevention in Manukau. It is essential to acknowledge the links to this work in the holistic sense of social development.

- New Settlers' Policy (supporting the development of diverse communities)
- Pacific Peoples' Policy (supporting the development of Pacific Island peoples)
- Youth Policy (education, employment and events)
- Education, Employment & Economic Development Strategies (further detail under "Social Environment Report" section of this Action Plan).

Further detail on the following is provided in the "Collaborative Action Plans" table on page xx.

- Community Safety Strategy/ Framework
- Health Strategy & Action Plan
- District Plan
- Parks Strategy
- Alcohol Strategy.

Summary

The information provided on national and local crime strategies has identified many commonalities for central and local government.

This information has been used as one strand of analysis in identifying Council's crime prevention priorities. Other strands used include:

- Social environment status in Manukau City
- Community perceptions, and;
- Crime statistics.⁵

The following sections provide greater details on these topics.

⁵ Refer to table on page xx.

Social Environment in Manukau City

This section provides information on the risk factors of offending and the current social environment in Manukau as they relate to these factors.

8. Population of Manukau

Total Population & Growth

- Total population: 283,197⁶
- Fastest annual growth: 5.5%⁷
- Steady natural increase⁸
- Continuing large net migration into Manukau⁹

These statistics pose an issue for crime prevention needs as planning the allocation of resources must reflect the burgeoning population, involve ethnic communities and provide resources in multi-lingual and multi-age formats.

Age distribution by ward

From the Census (2001) the population of Manukau comprises:

- 42% of children & youth (under 25 yrs)
- 50% of working age adults (25-64 yrs)
- 9% of the elderly (65-85+ years)

[adds to 101%]

The wards with the highest proportion of children & youth are Mangere (48%), Otara (49%) and Manurewa (44%). This information is important in selecting the location of youth programmes in the Crime Prevention Action Plan.

9. Social Environment Report (February 2003)

In terms of preventing crime it is highly recommended that effective interventions address the known causes of offending. Generally these factors can be loosely grouped under family/peers, individual, education/employment, socio-economic status and cultural identity¹⁰.

The following information provides detail of these risk factors for offending as well as the current status of Manukau in those areas as identified in Council's Social Environment Report.

Family & Peers

The risk factors related to family & peers include:

- having few social ties and/or mixing with anti-social peers
- having family problems (i.e. poor parental monitoring, negative relationships).

Actual levels of these behaviours in Manukau are unknown but should be used in prioritising at risk individuals for crime prevention projects. Currently we do know that the family types in Manukau consist of mostly couples with children (49%), couples without children (28%) and single parent families (23%). In addition to this:

- three of the eight murders in Counties Manukau this year were domestically related (August-November 2003)¹¹
- 7,789 incidences of family violence occurred in Manukau in 2002/03. 24% of which were repeat offenders.¹²

⁶ Census 2001

⁷ Estimated to reach 307,000 at 30 June 2002, an increase of 5.5 percent, compared with a national increase of 2.3 percent.

⁸ A natural increase of 4,086 to the city population in the year ended September 2002

⁹ The arrival and departure of migrants during the year ended September 2002 resulted in a net increase of 2,518 people to the city.

¹⁰ McLaren, K "Tough is not enough- getting smart about Youth Crime. A review of research on what works to reduce offending by young people." Ministry of Youth Affairs. June 2000

¹¹ New Zealand Herald. 15-16th November 2003 from Police statistics.

¹² Does not include homicides. South Auckland Family Violence Prevention Network newsletter October 2003 (from Counties Manukau Police statistics).

Council supported initiatives in this area include:

- a Children & Families Strategy & Action Plan for Council
- a review of Council's Youth Policy
- the establishment of a Manukau Children & Youth Advocate role
- the Collaborative Action Plan on Child Poverty in Manukau
- a Health & Crime Prevention Action Plan (family violence).

Individual

The risk factors relating to an individual include:

- barriers to treatment
- showing poor self-management and/or aggressiveness and anger
- demonstrating anti-social attitudes supportive of crime and/or abusing drugs & alcohol

Currently there is no information available on treatment and self-management issues, however these factors should be used in prioritising at risk individuals for intervention.

In terms of illicit drugs and alcohol in Manukau we know that:

- they have been involved in/or linked to four of the eight murders in Counties Manukau between August and November 2003
- the number of recorded drug offences has not significantly increased in Manukau since 2002 (refer to section on "Crime Statistics").

Nationally the role of alcohol is also known to be:

- related to violence. Statistics reveal that 10% of men & 5% of women were physically assaulted in and around alcohol in 2001, of these 22% were men and 12% were women aged between 16-24yrs¹³
- related to road fatalities. Statistics show that 23% of all fatal car accidents & 14% of all car injuries are caused by drink driving.¹⁴

Council supported initiatives in these areas include the:

- Alcohol Strategy
- Health Action Plan: illicit drug use, family & community violence (includes elderly abuse), gambling, poverty & injury prevention
- Priorities in the Crime Prevention Action Plan
- Road Safety Plan (drink driving).

Education

The risk factors regarding education include poor performance and attendance at school and a lack of positivity about school amongst youth and children. Currently in Manukau truancy is a major issue as is the lack of achieving educational qualifications. In Manukau 29.3% of residents over 15 yrs have no qualifications.

However there have been some improvements in these areas in that:

- more people have academic qualifications¹⁵ and,
- more Maori and Pacific People have qualifications.¹⁶

Initiatives in this area that are supported by Council include the Education Strategy (includes truancy), support for educational groups (i.e. COMET, Nga Tapuwae, Tamaki ki Raro, Wiri Early Learning Centre) and involvement in the Auckland University Maths Project.

¹³ Alcohol Strategy 2002. Manukau City Council

¹⁴ As above.

¹⁵ Obtaining degrees increased by 3.9% in 2001 from 1991 levels, and gaining secondary school qualifications increased 16.8% for the same period. Those leaving school without any qualifications have dropped by 10%.

¹⁶ The proportion of Maori people with qualifications increased from 40.1% in 1991 to 51.4% in 2001. This included an increase in gaining secondary school qualifications (10% to 34.2%) and achieving degrees (0.8% to 2.6%) over the same period. Only 38% of Pacific people aged 15 and over have no qualifications compared with 55% in 1991. The proportion of Pacific people with degrees or secondary school certificates almost doubled over the same period.

Employment

A risk identified under employment included a lack of vocational skills and/or jobs. Currently in Manukau 67% of Manukau job seekers have no formal qualifications and only 16.5% have qualifications higher than high school certificate. However improvements have occurred in that:

- income support dependency level is stable¹⁷
- there are fewer unemployment beneficiaries¹⁸ and registered jobseekers (particularly Maori & Pacific peoples)¹⁹
- nearly half of Maori and Pacific job seekers are young²⁰
- unemployment rate is at 6%.²¹

This shows that although unemployment and benefit dependency levels are dropping, a significant group still exists. Of concern is that the majority in this position are Maori and Pacific youth.

Poor performance and attendance at school, and the lack of vocational skills and jobs are factors that increase the risk for offending and victimisation. Where Council supports education and skill development programmes, impacts will be made in supporting crime prevention. Such initiatives in this area include the Youth Employment Strategy & Project, Mayor's Taskforce for Jobs and the Otara Work Creation Project.

Socio-Economic Status

The risk factor associated with socio economic status is living within a poor neighbourhood. The current income status of residents shows that Mangere and Otara have the lowest income levels in Manukau City. However improvements have been made in that:

- there is an increase in personal income²² with better income distribution since 1996²³
- economic wellbeing has improved faster for Maori and Pacific people since 1991.²⁴

These findings are encouraging for crime prevention; however significant income disparities continue to exist.

Recognition of Council's involvement in economic development reflects the fact that when communities are economically stable the protective factors against crime increase substantially. Council supported initiatives in this area include the Economic Development Strategy & Action Plan for Manukau, Auckland Regional Economic Development Strategy, Business Incentive Fund, Maori Economic Development Framework, Pacific Peoples Economic Development Framework, Tourism Strategy & Action Plan, and the Town Centres Strategy.

Cultural Identity

A risk factor related to this issue is when individuals and/or communities lack cultural pride and positive identity. Currently in Manukau there are 165 different ethnic groups²⁵ made up of:

- 52% Europeans
- 16% Maori
- 27% Pacific Island
- 15% Asian
- 1% Other.²⁶

By wards, those with the majority of European residents are Clevedon (94%), Howick (74%), Pakuranga (71%) and Manurewa (53%). In terms of Maori residency the wards of Otara (21%), Mangere (20%) and Manurewa (28%) are important to note. For Pacific Island people high residency is within Otara (63%), Mangere (59%), Papatoetoe (26%) and Manurewa (24%). Asian residents are most likely to live in the wards of Pakuranga (24%), Howick (23%) and Papatoetoe (20%).

¹⁷ the number of people receiving all types of income support dropped slightly over 2002 dropping significantly amongst people mainly income support dependent by 2.9%.

¹⁸ Number of unemployment beneficiaries dropped 19% in 2001-02.

¹⁹ Registered Manukau job seekers dropped 7% in 2002. Registered Maori job seekers also dropped 6.5% and Pacific people by 11%.

²⁰ 47% of Maori registered job seekers in Manukau are under 30 and 33% are under 25. 42% of Pacific Island registered job seekers are under 30 and 30% are under 25 (2002).

²¹ Estimated to drop to 6% in Manukau by December 2002, compared with a 4.9% average for New Zealand.

²² increased by 10% in total, or 1.8% per year in real terms(1996-2001)

²³ The income gap between rich and poor wards narrowed. The average per capita personal income in Otara was only 45% of Clevedon's per capita personal income (1996). In 2001, this ratio increased to 49%.

²⁴ The average personal income of Manukau's Maori and Pacific residents increased by 42% and 44% (1991-2001).

²⁵ Census 2001

²⁶ Census 2001

Council initiatives to support diverse communities and target funding for different ethnic groups will assist in the provision of culturally appropriate social development which assists crime prevention. This is reflected by Council in its New Settlers Strategy & Action Plan, the Pacific Peoples Policy, the Marae Development Strategy, Maori Economic Development Framework, Pacific Peoples Economic Development Framework and targeted funding streams such as in the Crime Prevention Action Plan.

Summary

Success or protection against crime lies within strong whanau and friends, education, employment, self management and cultural identity.

This Plan acknowledges the work of Council and central government agencies on these issues and recognises that this effort underpins the objectives of the Crime Prevention Action Plan.

In selecting projects for the Crime Prevention Action Plan, Council will endeavour to target these risk factors for criminality as well as adopt the principles of best practice.²⁷

²⁷ Refer to "Project Selection" on page xx.

Perceptions of Crime in Manukau

10. Community Consultation

In 2003 Manukau City Council commenced the development of a Community Safety Strategy aiming for a safer Manukau. As a part of this the Crime Prevention Action Plan was initiated.

In order to provide community participation Council held city-wide public meetings and used Council's Annual Perception Survey results. The following provides an analysis of the community feedback gained.

10.1 Community Meetings

The first round of public meetings was held across the seven wards of Manukau and comprised:

- ten general meetings
- three Maori hui
- three Pacific Island fono
- a New Settler meeting and
- three Youth forums (including a new settler youth meeting).

Public participation was strong with over 420 people in attendance. For detailed information on these results please refer to the Crime and Safety Community Consultation Report available by contacting Council's Community Safety Planner.

The crime priorities across the city were:

- dishonesty crimes (burglary)
- health safety (drugs & family violence)
- anti-social behaviour (violence, gangs & bullying)
- justice system (Police).

Recommendations were also made by communities for addressing these issues. This information has been used in selecting the objectives for projects in the Crime Prevention Action Plan.

10.2 Annual Citizen's Perception Survey 2003

A total of 503 interviews were conducted city-wide applying broad gender and ethnic quotas to match the population make up within each ward.²⁸

The results of this survey showed that during the day:

- Most residents feel safe in their homes (92%) - a significant increase from the previous year (86%). This occurred despite two high profile 'invasion' type murders in the city during the survey period.
- The majority of residents feel safe in their neighbourhoods (91%). Up from 84% in 2002.
- Most people do feel safe in their local town centre (86%), with the numbers feeling very safe increasing from 20% last year to 28% currently.

The results also showed that during the night:

- Most residents felt safe in their homes (81%). These are the highest levels since 2000.
- Perceptions of safety in the neighbourhood are lower at only 60%; however this figure is also up on 2002.
- Over a third feel unsafe in their local town centre (36%), continuing the downwards trend of recent years.

The survey also investigated the types of crime residents in Manukau were fearful of. It found that:

- There is a high level of concern, particularly regarding property related crime.
- 75% or more of residents said they were fairly or very concerned about being burgled, having their car broken into/stolen or having their property vandalised.

²⁸ The maximum margin of error for this sample at 90% confidence level is $\pm 3.7\%$ and at the 95% confidence level $\pm 4.4\%$.

- The level of concern for crime against people, whilst a little lower is still high with 50% or more concerned about being assaulted, being harassed or intimidated in a public place and/or being sexually assaulted.

In terms of victimisation, 27% of residents reported they had been the victim of a crime in the last 12 months, up from the 20% recorded in 2000. Of these 20% of victims had not been reported the incidents to police, generally because they felt the police would not respond or the crime was not bad enough to report.

10.3 Crime & Safety Questionnaire

The 2003 questionnaire received responses from 244 people. After this survey was conducted Council's Annual Citizen's Perception Survey was instigated. The information provided below does not include the findings of the Citizen's Perception Survey (refer to section 10.2 above).

Is crime perceived as a local problem in Manukau City?

The majority of respondents believed crime was a local problem (65%). Across the city, Mangere, Papatoetoe, Otara and Manurewa residents felt that crime was more of a serious local concern (as opposed to other areas). Overall, the younger generation did not perceive crime as an issue. When comparing Manukau results to the National Victimization Survey (1996) Manukau residents held an elevated perception that crime was a local problem (64% vs. 33%) respectively.

Is local crime on the increase in Manukau since last year?

A large section of the community felt that crime is on the increase (44%). This perception is most prevalent amongst females, those over 20 yrs and medium income earners. Howick, Mangere and Clevedon are areas where residents are most likely to feel crime is stable.

When comparing Manukau to the National Victimization Survey (1996) Manukau had an elevated perception that crime had increased (44% vs. 15.5% respectively).

Most feared crimes in Manukau

The most feared crime was burglary. The wards with the highest levels feared for burglary were Manurewa, Pakuranga and Papatoetoe.

For Howick and Clevedon the most feared crime was damage and or theft of their cars, whereas Mangere residents were the most fearful of all crimes.

The following types of crime are more feared in Manukau than nationally:

- being attacked & robbed (60% vs. 42%)
- having home/property damaged by vandals (62% vs. 42%)
- having car deliberately damaged /broken into (65% vs. 48%).

Most feared locations for crime in Manukau

The most feared location for crime was alleyways (regardless of age, gender, ethnicity or income). Outside of this public parks, car parks and at home were also much feared.

Home Safety in Manukau

The Annual Citizen's Perception Survey has measured the perception of safety within homes in Manukau. Consistently results showed a certain level of fear within the home. Asking this question was an attempt to find out why people are fearful in their homes.

A slight majority felt it was easy for burglars to break into their homes. By ward, Papatoetoe stood out as an area where people felt it would be harder for burglars to enter their homes. When Manukau results are compared with the National Victimization Survey the majority of respondents in both surveys said that their houses would be "very" or "fairly" easy to break into. Also the proportion of people who can't afford to do more to prevent burglary is much higher in Manukau (28%) than nationally (14%).

Victim Services in Manukau

The majority of those who had an opinion on whether there are enough victim services did not think there were. A trend exists in that older respondents and all ethnic groups (except European) were more likely to believe there were insufficient victim services.

A slight majority of respondents were also able to identify a victim service. The most commonly identified were Victim Support and Neighbourhood Support. Interestingly enough Neighbourhood Support is not a specific service for victims.

Crime Prevention Services in Manukau

The majority of respondents could not identify any crime prevention services. For those that could, Neighbourhood Support and Crime Watch Patrols were the most recognised; however concerns were raised regarding their effectiveness to prevent crime.

Should Councils be involved in crime prevention?

There was overwhelming support that councils should have a role in crime prevention (85%).

Crime Priorities

The community were asked what their crime priorities were. Results showed they wanted more Police, information on crime prevention methods and drug & alcohol programmes.

Crime Prevention Ideas

Respondents were asked what ideas they had to prevent crime. Results showed three main themes for more Police, tougher penalties and crime prevention education.

Crime in Manukau

The following crime statistics (national & regional) have been analysed in order to identify crimes of statistical concern, pinpoint communities of need and identify the dominant age and ethnicity of offenders. This information assists in targeting the Crime Prevention Action Plan to priority areas for assistance and intervention in a culturally and age appropriate manner.

11. Background

Recorded & Resolved Offences

It is important to note that the use of crime statistics from Police only provides information as to recorded and resolved offences.

Recorded offences are when an incident is reported to or detected by Police and where Police believe an offence is likely to have been committed. It therefore cannot identify crimes when victims do not report them.

Resolved offences are when an offender is identified and dealt with by the Police. There are various options available for resolving an offence including diversion, warning, prosecution, fine etc. A resolved offence does not necessarily mean an offender was prosecuted.

Police & Council Boundaries

Council boundaries largely align with the Counties Manukau Police District, however the Police District extends to include the Franklin and Papakura District Council territories. In addition to this there are two instances where Police boundaries cross over into another Council's domain; this is in the Otahuhu/Papatoetoe Police area (which is between Auckland & Manukau City Councils) and the Papakura Police area (includes both Papakura District & Manukau City Councils).

Council wards do not exactly align with the Police District areas. This occurs in Howick where the Police area includes Pakuranga. These boundary distinctions are important when using Police statistics.

Currently (2003-04) Counties Manukau Police is developing new boundaries to more closely align to Council territories.

Victimisation

Studies of victimisation have shown that a large proportion of people (predominantly Maori, Pacific Island peoples and new migrants) do not contact Police when victimised by crime. Due to this reluctance the true level of crime continues to be unknown. For this reason many criminologists (including the Ministry of Justice) recommend criminal statistics be used in conjunction with victimisation surveys. Council has followed this model by using victimisation information from the Annual Citizen's Perception Survey and Crime & Safety Survey to determine the priorities of the Crime Prevention Action Plan.

12. National Crime Levels

National Recorded Crime Levels

The majority of recorded crime in New Zealand (2001/02/03) was caused by dishonesty (58.9%), drugs & anti-social (12.4%) and violent offences (10.2%).

When comparing Counties Manukau's recorded crime levels against the rest of the country (as weighted per 10,000 population) we find that the Counties Manukau District has consistently fallen below that of Auckland City, Bay of Plenty and Eastern Police Districts since 2000 (by an average of 118.2- 400.3 occurrences per year). However it must be acknowledged that when these statistics are not weighted by population numbers, Counties Manukau has the second highest recorded crime level in New Zealand (second only to Auckland City).

By individual crime the most concerning for Counties Manukau (where we are the highest in the nation) are the levels of violent offences (although only up by the national average increase of 3.6%). This does not include homicides as Police statistics show that since 1994/95 Counties Manukau ranks 5th out of the 12 Police districts.²⁹

Of rising concern (where Counties Manukau is second nationally) are the crime levels for:

- sexual offences (although a decrease of 5.5% occurred 2002/03, lower than the national average) and
- administrative offences (an increase of 112.3% for 2002/03, higher than the national increase).

National Resolved Crime Levels

Resolved crime statistics are important as they show the levels of the Police's ability to deal with a complaint. Where resolution levels are low, concern as to Police resourcing and staffing levels may arise. Of most regional concern is where the resolution levels are the lowest in the nation. This occurred for the following crimes in 2002/03:

- violence offences (69.7% were resolved)
- drugs & anti-social offences (81.4% were resolved)
- dishonesty offences (only 14.8% were resolved)
- property abuses (59% were resolved).

13. Counties Manukau Crime Statistics 2002/03³⁰

The majority of recorded crime in the Counties Manukau Police District was caused by offences within the categories of dishonesty (62.2%), violence (12.4%) and drugs & anti-social (8.1%). This aligns with the national crime types although the levels do differ slightly.

In order to establish priorities, the crime types selected reflect crimes with high levels at a regional and national level.³¹ These crimes are:

- dishonesty offences³²
- violence offences³³
- drugs & anti-social offences³⁴
- sexual offences³⁵ and
- administrative offences.³⁶

The population weighted statistics have been used so as to provide an equitable comparison across different communities within Manukau. Only the top two Police areas in Manukau City per crime type are identified.

13.1 General Crime Levels³⁷

Across Counties Manukau the highest level of recorded crime is in Papakura (including Clevedon) with 1,714.3 recorded offences (2002/03) an increase of 12% from the previous year. Second to this was Manurewa with 1,668.9 (2002/03). This was the highest regional increase at 14.2%. The average variance in the region was an increase of 8.5% signalling both Papakura and Manurewa as priorities.

In terms of resolution rates Howick (which includes Pakuranga) has the lowest regional rate at 25.1%. Second to this is Otahuhu/Papatoetoe at 29.3%. The average regional rate is 34.3% identifying Howick as a priority for the region.³⁸

²⁹ New Zealand Herald, 15-16th November 2003 from national Police statistics.

³⁰ Counties Manukau Crime Statistics, August 2003

³¹ New Zealand Crime Statistics 2002/03, August 2003.

³² Dishonesty includes burglary, car conversion, theft, receiving and fraud.

³³ Violence includes homicide, kidnapping & abduction, robbery, grievous/ serious/minor assaults, intimidations/threats and group assemblies.

³⁴ Drugs & anti-social offences include drugs (not cannabis), cannabis only, gaming, disorder, vagrancy, family offences and Sale of Liquor Act 1989.

³⁵ Sexual offences includes sexual affronts, immoral behaviour, sexual attacks, abnormal sex and miscellaneous.

³⁶ Administrative offences include offences against justice, births/deaths & marriages, immigration, racial, against national interest and by-law breaches

³⁷ Refer Counties Manukau Crime Statistics 2002/03, August 2003

³⁸ Note that this information was not population weighted

13.2 Violent Offences³⁹

Across Counties Manukau the highest level of violent crimes was in Manurewa with 1,488 recorded offences (. This was an increase of 4.2% from the previous year. Second to this is the Otahuhu/Papatoetoe area with 1,290 recorded offences , an increase of only 2.5%. Although Howick has low levels of recorded crime it should be noted that it had the highest increase within Manukau at 12.7%. The average variance in the region was an increase of 3.6% which shows that Howick is particularly above the regional rate. The offender characteristics (by ethnicity and age) for these crimes are as follows⁴⁰ and will be used in the Crime Prevention Action Plan to target resources.

Manurewa ⁴¹	Otahuhu/Papatoetoe ⁴²	Howick ⁴³
<i>Ethnicity of offenders:</i> 49.8% Maori 28.8% Pacific Island peoples 16.9% Caucasian	<i>Ethnicity of offenders:</i> 40.2% Pacific Island peoples 32.4% Maori 11.5% Indian 10.9% Caucasian	<i>Ethnicity of offenders:</i> 52.4% Caucasian 18.6% Maori 12.1% Pacific Island peoples
<i>Age:</i> 88.7% adults 11.3% juveniles	<i>Age:</i> 92.3% adults 7.7% juveniles	<i>Age:</i> 85% adults 15% juveniles

[what ages are classed as juvenile?]

In terms of resolution rates for this crime the lowest of the region was in Otahuhu/Papatoetoe at 65.1% . Second to this was Papakura (includes Clevedon) at 67.4% . The average resolution rate within the region was 69.7% which shows that both of these areas are within reach of the norm.

13.3 Sexual Offences⁴⁴

Across Counties Manukau the area with the highest rates of sexual offences was Manurewa with 83 . This was a decrease of 27.8% from the previous year. Second to this was Mangere with 67, an increase of 11.7%. Also important is Papakura which obtained the highest increase for the region at 33.3%. The average regional variance was a decrease of 5.5% prioritising all three areas for high levels of offending. The offender characteristics (by ethnicity and age) for these crimes are as follows⁴⁶ and will be used in the Crime Prevention Action Plan to target resources.

Mangere ⁴⁷	Manurewa ⁴⁸	Papakura ⁴⁹
<i>Ethnicity of offenders:</i> 60.6% Pacific Island peoples 18.2% Maori	<i>Ethnicity of offenders:</i> 56.4% Caucasians 25.5% Pacific Island peoples 18.2% Maori	<i>Ethnicity of offenders:</i> 37% Caucasian 59.3% Maori 3.7% Pacific Island peoples
<i>Age:</i> 93.5% adults 6.5% juveniles	<i>Age:</i> 91.4% adults 8.6% juveniles	<i>Age:</i> 91.3% adults 8.7% juveniles

The lowest resolution rate in the region was for Otara at 34.3% (. Second to this was Howick at 36.7%. The average rate in the region was 50%; this prioritises both areas within the region.

13.4 Drugs & Anti-Social Offences⁵⁰

The highest regional rates of drugs and anti-social offences were in Manurewa with 955, a decrease of 1.5% from the previous year. Second to this was Mangere with 685, a decrease of 2.7%. The average

³⁹Refer Counties Manukau Crime Statistics 2002/03. August 2003

⁴⁰ Only provides percentages that are over 10%

⁴¹ 1102 offenders were apprehended 2002- refer Official Calendar Statistics. March 2003.

⁴² 853 offenders apprehended in 2002- refer Official Calendar Statistics. March 2003.

⁴³ 397 offenders apprehended 2002- refer Official Calendar Statistics. March 2003.

⁴⁴ Refer Counties Manukau Crime Statistics 2002/03. August 2003

⁴⁵ Only provides percentages that are over 10%

⁴⁶ 33 offenders apprehended 2002- refer to Official Calendar statistics. March 2003.

⁴⁷ 55 offenders apprehended in 2002- refer to Official Calendar statistics. March 2003.

⁴⁸ 27 offenders apprehended in 2002- refer to Official Calendar statistics. March 2003

⁴⁹ Refer Counties Manukau Crime Statistics 2002/03. August 2003.

variance in Manukau was an increase of 12.3%. The offender characteristics (by ethnicity and age) for these crimes are as follows⁵¹ and will be used in the Crime Prevention Action Plan to target resources.

Manurewa ⁵²	Mangere ⁵³
<i>Ethnicity of offenders:</i> 57.8% Maori 20.6% Caucasian 18.2% Pacific Island	<i>Ethnicity of offenders:</i> 46% Caucasian 25.2% Pacific Island 20.5% Maori
<i>Age:</i> 87.1% adults 12.9% juveniles	<i>Age:</i> 94.1% adults 5.9% juveniles

In terms of resolution rates for this crime the lowest level in Manukau occurred in Otahuhu/Papatoetoe with 79% (2002/03). Second to this was Manurewa at 79.3%. The average resolution rate for the region was 81.4% which shows that both areas are average for the region.

13.5 Dishonesty Offences⁵⁴

The highest regional rates of dishonesty offences were in Manurewa with 7,348 offences. This rate had increased by 20.8% since the previous year. Second to this was Otahuhu/Papatoetoe with 6,273 an increase of 4.6%. The average variance for the region was an increase of 7.1% prioritising Manurewa above the regional norm. The offender characteristics (by ethnicity and age) for these crimes are as follows⁵⁵ and will be used in the Crime Prevention Action Plan to target resources.

Manurewa ⁵⁶	Otahuhu-Papatoetoe ⁵⁷
<i>Ethnicity of offenders:</i> 57.6% Maori 22% Pacific Island peoples 15.7% Caucasian	<i>Ethnicity of offenders:</i> 43.8% Maori 29.5% Pacific Island peoples 16.5% Caucasian 10.2% Asiatic, Indian or "other"
<i>Age:</i> 60.3% adults 39.7% juveniles	<i>Age:</i> 69.1% adults 30.9% juveniles

The lowest resolution rates for this crime occurred in Howick at 11.5%. Second to this was Otahuhu/Papatoetoe at 12.7%. These were below the average resolution rate for the region at 14.8%.

13.6 Administrative Offences⁵⁸

The highest levels of offending occurred in Manurewa with 850 offences. This was an increase of 157.6% on the previous year (the highest increase in the Counties Manukau Region). Second to this was Mangere with 668 (2002/03), an increase of 70.8%. The average regional variance was 112.3% identifying Manurewa as the highest priority area.

This high increase in recorded offending could be attributed to the proactive policing strategies of the Counties Manukau Police for offences of this type (i.e. Manurewa's Operation Youth Safety which targeted truancy). This increase therefore should not be construed negatively but rather as a response to the public call for Police activity in this area. Further information is needed in terms of the issues facing Mangere in this offence category.

The offender characteristics (by ethnicity and age) for these crimes are as follows⁵⁹ and will be used in the Crime Prevention Action Plan to target resources.

⁵¹ Only provides percentages that are over 10%

⁵² 820 offenders apprehended 2002- refer official Calendar statistics March 2003.

⁵³ 591 offenders apprehended 2002- refer calendar statistics March 2003.

⁵⁴ Refer Counties Manukau Crime Statistics 2002/03. August 2003.

⁵⁵ Only provides percentages that are over 10%

⁵⁶ 1218 offenders apprehended 2002- refer official calendar statistics March 2003.

⁵⁷ 1012 offenders apprehended 2002- refer official calendar statistics March 2003.

⁵⁸ Refer Counties Manukau Crime Statistics 2002/03. August 2003.

⁵⁹ Only provides percentages that are over 10%

Manurewa ⁶⁰	Mangere ⁶¹
<i>Ethnicity of offenders</i> 61% Maori 23.5% Pacific Island 11.8% Caucasian	<i>Ethnicity of offenders</i> 47.6% "other" ethnic classification 18.8% Asiatic
<i>Age:</i> 26.9% adults 73.1% juveniles	<i>Age:</i> 81.5% adults 18.5% juveniles

In terms of resolution rates the lowest occurred in Otara at 81.4%. Second to this was Mangere at 87.3%. The average regional rate was 88.2%.

Youth Offending

In New Zealand young offenders have comprised a stable 20% of total offending for the last 12 years. Of these offences 20% are committed by 80% of young offenders the balance of offences (80%) are committed by a small group of serious young offenders (20%). Targeting this small group of young offenders who are identified as medium to high risk can substantially reduce levels of youth offending.⁶² The previous statistical information can identify the crimes and areas of youth offending in order to prioritise projects in the Crime Prevention Action Plan.

Summary

In analysing these statistics, priorities based on geography, ethnicity and age can be determined and used in targeting projects under the Crime Prevention Action Plan.

Regional concerns include offending levels in violence, sexual and administrative offences. City concerns include:

- Papakura (including Clevedon) & Manurewa for overall crime levels
- Manurewa, Otahuhu/Papatoetoe & Howick for violent offences
- Manurewa, Mangere & Papakura for sexual offences
- Manurewa & Mangere for drugs & anti-social behaviour offences
- Manurewa & Otahuhu-Papatoetoe for dishonesty offences
- Manurewa for administrative offences.

In terms of resolution regional priorities include violence, drugs & anti-social behaviour, dishonesty and property abuse offences. Issues for the City include:

- Howick & Otahuhu/Papatoetoe for overall resolution rates
- Howick & Otara's rates for sexual offences
- Howick and Otahuhu-Papatoetoe rates for dishonesty offences.

⁶⁰ 456 offenders apprehended in 2002- refer official calendar statistics March 2003.

⁶¹ 410 offenders apprehended in 2002- refer official calendar statistics March 2003.

⁶² Judge A. Becroft. Youth offending: examining the evidence. A perspective from the Youth Court of NZ. November 2003.

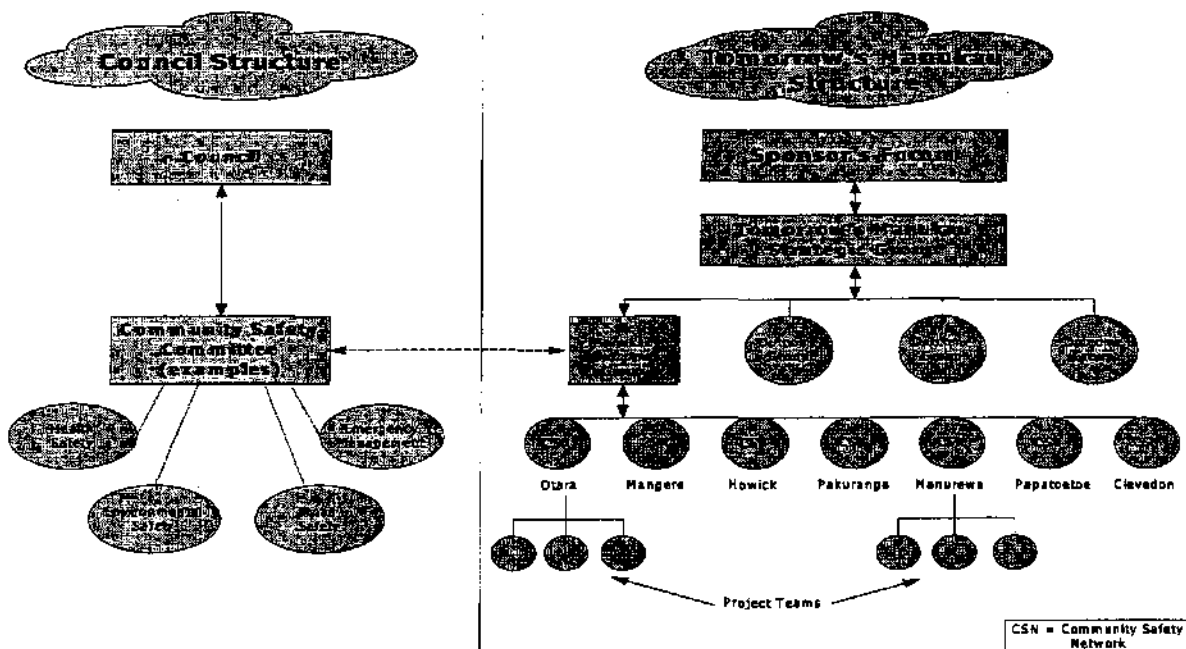
Crime Prevention Action Plan

There are two main types of action proposed. They relate to Council's structure and areas for crime prevention projects.

14.1 Structure

The Crime Prevention Action Plan aligns with the Community Safety Framework regarding Councils structure for community safety and crime prevention. This includes the development of local Community Safety Networks, partnering with agencies and community representatives (Safer Manukau Outcome Group) and a Community Safety Committee.

The following diagram shows the changes for both Council's structure and community-government partnering under Tomorrow's Manukau.



14.2 Crime Prevention Projects

Crime Prevention Theory

There are three strands of crime prevention theory for targeting crime prevention projects. The first is "situational crime prevention" which prevents crime by making it more difficult, risky and less rewarding to commit. The second is "social/developmental crime prevention" which seeks to prevent criminal behaviour by influencing the attitudes and behaviour of those most likely to offend and/or re-offend. The third is "tertiary" crime prevention which focuses on preventing re-offending amongst known offenders and also includes the provision of services to victims. A summary of how the Crime Prevention Action Plan projects relate to social, situational and tertiary crime prevention practice is provided in Appendix 1.

Identification of Priorities

The selection of projects in the Crime Prevention Action Plan has used all the information discussed thus far. To summarise, the following table shows how crime priorities have been identified from the analysis of:

- national and local crime strategies and policies
- social-environmental scan of Manukau
- community perceptions in Manukau
- crime statistics for Manukau.

Crimes ⁶³ :	Strategies:	Social Environment:	Community Perceptions:	Crime Statistics:
Burglary ⁶⁴	•		•	•
Family Violence & Child Abuse	•		•	
Theft of/ from & damage to Vehicles			•	•
General Violence & Violent crime (including sexual violence)			•	•
<i>Youth & children (at risk & offenders)</i> ⁶⁵	•	•		
<i>Those addicted to drugs & alcohol</i>	•			•
<i>Maori</i>	•	•		
<i>Pacific Island Peoples</i>	•	•		

Project Selection

The projects identified in the Crime Prevention Action Plan are the foundations for targeted funding and development. The ideas expressed are the minimum requirements a project must have for consideration. Further development of project detail is needed and will be developed in association with the appropriate local communities through Community Safety Networks. They will reflect best practice models such as:

- targeting multiple causes of offending using multiple techniques by touching the four corners of a persons life- family, school/work, peer group and neighbourhood⁶⁶
- teaching new skills in active ways
- good outcomes need good people.⁶⁷

Community consultation also recommended project directions in addressing these crimes. Council will be cognisant of these recommendations when working with smaller community groups.

In terms of project delivery Council will seek to support projects that are endorsed and supported by other government or community agencies in order to work collaboratively. This process of selection is due to limited Council funding, Council's inability to establish long term projects and the opportunities to align with pre-existing accountability processes.

In addition to this, Council's service delivery department *Safer Manukau* will also develop, deliver and support some initiatives based upon capacity and capability.

Monitoring and Review

The success of each project will be determined by the project focus and measured accordingly. However, monitoring mechanisms for crime prevention success will include (but not be limited to):

- crime statistics
- closed circuit television camera statistics
- perception survey results and;
- recidivism rates for participants in projects.

Feedback on progress will largely be provided to the community through the Community Safety Networks & Safer Manukau Outcome Group and to politicians and agencies through the Community Safety Committee as well as the Safer Manukau Outcome Group.

⁶³ Bold indicates a key crime priority. *Italics* indicates a secondary priority [missing footnotes]

⁶⁴ as above page 14

⁶⁷ McLaren, K "Tough is not enough- getting smart about Youth Crime. A review of research on what works to reduce offending by young people." Ministry of Youth Affairs. June 2000

Table 1: Detailed Action Plan
showing actions, targets, objectives, timeframes and resources

Crime Prevention Action Plan

Action	Target	Objective	Responsible Party	Timeframe	Estimated Cost
Regional COPS project between Auckland Territorial Local Authorities & Police	Auckland Region	Reduction of : Violence, Substance Abuse, Community Perceptions/ Police service delivery.	Community Safety Planner	2003-2005	\$20,000
Community Safety Grants	City-wide	Support voluntary community initiatives for community safety & crime prevention.	Safer Manukau Outcome Group or Community Safety Committee (TBD)	To be determined 2004 onwards	\$30,000 Crime Prevention Unit, Ministry of Justice
Immediate Response Fund	City-wide	Funding for unexpected community safety & crime crisis.	Safer Manukau Outcome Group or Community Safety Committee (TBD)	2004 onwards	\$30,000
Community Safety Strategy & Crime Prevention Action Plan.	City-wide	Administration.	Community Safety Planner	July 2004	\$6,900
Community Safety Networks	City-wide	To provide a local community forum for crime prevention issues & projects.	Safer Manukau	2003 onwards	\$10,000
Crime Prevention Booklet	City-wide	Provision of information on: CPTED, burglary, theft off/from vehicles, safety tips & community contacts.	Safer Manukau	July 2004	\$8,000
Advocacy & brokerage of Community Partnerships	City-wide	To reflect local community concerns & improve partnerships for crime prevention.	Safer Manukau	2004	Human resource
Update of Safer Manukau website	City-wide	To provide relevant and useful crime prevention information for stakeholders.	Safer Manukau	2004/05 dependant on Annual Plan	To be determined

D23

Project Name	Target Group	Objectives	Responsible Party	Start Date	Estimated Cost
Youth at risk of offending	Papatoetoe Manurewa Maori Pacific Island peoples	To support/develop projects which intervene with multi-systemic risk factors for offending.	Safer Manukau (TBD)	July 2004	\$16,000
Young Offenders (medium – high risk)	Papatoetoe Manurewa Maori Pacific Island peoples	To support/develop projects which intervene with medium risk young offenders in order to reduce offending & victimisation of dishonesty offences.	Community Safety Planner to contract out.	July 2004	\$16,000
Children	Mangere, Otara, Manurewa, Maori, Pacific Island peoples Caucasians	To support/ develop projects focusing on early intervention with children.	Safer Manukau (TBD)	July 2004	\$16,000
Community Safety Initiatives					
Counties Manukau Neighbourhood Support Committee	Counties Manukau Region	Support Neighbourhood Support with facility & officers time	Safer Manukau or Community Safety Planner (TBD)	2004	In kind contribution
CPTED initiatives	Refer to Environmental Safety section of CPAP.				
Town centre Ambassadors	Refer to Collaborative Action Plans "Safer Manukau Community Facilities" section.				
Crime Prevention Booklet	Refer to Crime Prevention & Safety initiatives				
Public Safety Initiatives					
Youth & Family Justice initiatives	Refer to section above.				
Anti-violence Education or marketing	Refer to Anti- Social Behaviour- Violence section				
Other Initiatives					
Police Advocacy	Administrative offences, Mangere	Identify issues & establish Council's ability to assist	Community Safety Planner	2004	Human resource
Crime Prevention Booklet	Refer to Crime Prevention & Safety section. Look into translation of material into diverse languages.			2004/05 dependant upon Annual Plan	TBD

Activity	Priority	Objective	Responsible	Timeline	Resources
Support Maori crime prevention initiatives.	Focusing on violence, drugs & anti-social and dishonesty offences	Focus on reduction of re-offending amongst Maori offenders.	Community Safety Planner	July 2004 2003-2006	\$10,000
Supporting Alcohol Strategy	Refer to Anti-social behaviour - Violence section below.				
Support anti-violence & family violence education or marketing campaigns	Refer to Anti-social behaviour - Violence section below.				
Supporting Alcohol Strategy	Refer to Drugs & Alcohol Section.				
Support anti-violence & family violence education or marketing campaigns	Manurewa, Papatoetoe, Howick, Pakeha, Maori, Pacific Island peoples, adults	To raise the awareness around family violence & promote alternative conflict dispute resolution methods.	Safer Manukau or Community Safety Planner (TBD), Health & Wellbeing Planner	July 2004	\$15,000
Town centre Ambassadors	Refer to Collaborative Action Plans "Safer Manukau Community Facilities" section.				
Community Action on Youth and Drugs (CAYAD)	Refer to Collaborative Action Plans "Health Action Plan"				
Supporting Alcohol Strategy	Manurewa, Mangere, Maori, adults	Pilot project with Maori Wardens on monitoring licensed establishments and the SOLA (in full) in order to improve host responsibility and reduce alcohol related violence/harm.	Community Safety Planner, Health & Wellbeing Planner	July 2004	\$10,000
Town centre Ambassadors	Refer to Collaborative Action Plans "Safer Manukau Community Facilities" section.				
CPTED initiatives	Refer to Environmental Safety section of CPAP, below.				
Crime Prevention Booklet	Refer to Crime Prevention & Safety section of CPAP, below.				

Project	Location	Objective	Responsible	Start Date	Cost
CPTED design & minimum standards guidelines	Manurewa, Papatoetoe, Mangere, Otara	To establish a mechanism for measurement & prediction of crime & safety hazards in design of public spaces.	Community Safety Planner to contract out. Environmental Management, Parks, Safer Manukau	July 2004	\$25,000
CPTED guideline implementation	Manurewa, Papatoetoe, Mangere, Otara	To implement CPTED recommendations and reduce crime & fear of crime in those locations.	Community Safety Planner to contract out. Environmental Management, Parks, Safer Manukau	July 2004	\$35,000
CPTED training & development for Manukau City Council staff	Manukau City Council	To improve Council officers understanding & awareness of CPTED.	Safer Manukau lead, Parks, Environmental Management	July 2004	\$10,000
CPTED assistance for Clendon Renewal Programme	Manurewa	To provide resources for designing and/or implementing CPTED mechanisms in hot spot crime areas of HNZ housing.	Community Safety Planner	July 2004	Officers time \$5,000
Crime Prevention Booklet	Refer to Crime Prevention & Community Safety section above.				
Closed Circuit Television (CCTV) policy & guidelines	Manukau City Council	To improve the location of Council resources on CCTV.	Community Safety Planner lead, Safer Manukau, Environmental Management	April 2004	Human Resources
CCTV maintenance & monitoring	Papatoetoe & Manurewa	To maintain the quality of Council CCTV, provide live evening monitoring 12 hours per day 7 days per week and administer monthly forums with Police & service provider.	Community Safety Planner & Safer Manukau	Continuous	\$199,855
CCTV roll out	Otara, Mangera, Old Papatoetoe	To provide CCTV for at risk and high crime town centres.	Community Safety Planner lead, Safer Manukau, Environmental Management	July 2004	\$85,000

D26

Collaborative Action Plans.

Action	Target	Objective	Start/End	Cost/Est.
Health Action Plan	Child Poverty	Reduction through plan of action	Plan- 2003 Implementation- 2004/05	\$10,000
	Alcohol	Youth alcohol harm minimisation education project	2003/04	\$50,000
		Alcohol Accord	2003/04	\$8,500
	Bullying	Reduce bullying through school programmes	2004/05 subject to Annual Plan	To Be Determined
	Illicit drugs. Manurewa, Maori, adults	Community Action on Youth and Drugs (CAYAD). Reduce proliferation of drugs & drug use, increase community awareness & education and support community initiatives	2003-2005 to be confirmed	Ministry of Health contract \$175,000 Council officers
	Family Violence	Support Programmes	2004/05 subject to Annual Plan	To Be Determined
Support implementation of Te Rito- NZ Family Violence Strategy		2003-2005	\$5,000	
Gaming Venue Policy	Gambling	Targeting the location & quantity of gambling venues.	2003/04	\$11,000
Alcohol Strategy		Community Education Initiative	2003/04	\$30,000
		Liquor Bans & bylaws	2003/04	Council funded
Road Safety Plan	Road Safety	Reduce drink driving	2004	Council & LTSA funding
Graffiti Strategy & Action Plan	Graffiti & community beautification	Education, eradication & enforcement	TBD	Manukau Beautification Trust & Council funding
Prostitution Bylaws	Prostitution	Bylaws for location, proliferation and quantity of brothels.	2003/04	
Community Safety Framework	Council structure	Develop improved agreements, & resource partnering with stakeholders as well as providing forums for community advocacy. Community Safety Committee, Safer Manukau Outcome Group & Community Safety Networks.	2003/04	\$322, 700 for staff and administration
Safer Manukau City Council Facilities	Town centre Ambassadors	Provide eyes & ears in town centres & community facilities targeting violence, burglary, theft off/from motor vehicles & general public/staff safety	2003/04	Dedicated budget
	Facility security	Panic alarms & secure cash collection		
Education Strategy	Truancy	Detection & reduction of truancy in Manukau	2003 onwards	Dedicated budget
District Plan & Parks Strategy	CPTED	To incorporate & predict crime and safety issues in environmental design	2003 onwards	

Appendix 1: Crime Prevention Projects
in relation to crime prevention theory (social, situational & tertiary crime prevention).

Crime Prevention Action Plan Goals & Targets:	Social Crime Prevention Initiatives:	Situational Crime Prevention Initiatives:	Tertiary Crime Reduction Initiatives:
Burglary	<ul style="list-style-type: none"> Community Safety Networks –Supporting patrol groups Supporting Maori crime prevention initiatives 	<ul style="list-style-type: none"> Community Safety Networks – Supporting patrol groups Supporting Counties Manukau Neighbourhood Support Committee Town centre Ambassadors Crime Prevention booklet CPTED initiatives & CCTV 	<ul style="list-style-type: none"> Community Safety Networks –Supporting patrol groups Supporting Counties Manukau Neighbourhood Support Committee Town centre Ambassadors Crime Prevention booklet
Family Violence & Child Abuse	<ul style="list-style-type: none"> Social marketing/ education on anti-violence/bullying messages Supporting Alcohol strategy project Health Strategy & Action Plan 	<ul style="list-style-type: none"> Health Strategy & Action Plan Supporting Alcohol strategy project 	
Theft off/ from & damage to Vehicles	<ul style="list-style-type: none"> Same as "Burglary" above 	<ul style="list-style-type: none"> CPTED & CCTV initiatives Town centre Ambassadors 	
General Violence & Violent crime (including sexual violence)	<ul style="list-style-type: none"> Same as "family violence" as above 	<ul style="list-style-type: none"> CPTED & CCTV initiatives Town centre Ambassadors 	
Youth & children (at risk & offenders)	<ul style="list-style-type: none"> Youth & Family Justice initiatives Youth Strategy & Child Advocate 	<ul style="list-style-type: none"> Youth Strategy & Child Advocate 	<ul style="list-style-type: none"> Youth & Family Justice initiatives
Those addicted to drugs & alcohol	<ul style="list-style-type: none"> CAYAD Project Supporting Alcohol Strategy project 	<ul style="list-style-type: none"> Supporting Alcohol Strategy project <ul style="list-style-type: none"> Health Strategy Alcohol Strategy 	
Maori	<ul style="list-style-type: none"> Maori Safety Initiatives Youth & Family Safety Projects 	<ul style="list-style-type: none"> Supporting Alcohol Strategy project 	
Pacific Island Peoples	<ul style="list-style-type: none"> Community Safety Networks Youth & Family safety Projects Anti-violence education or marketing 		